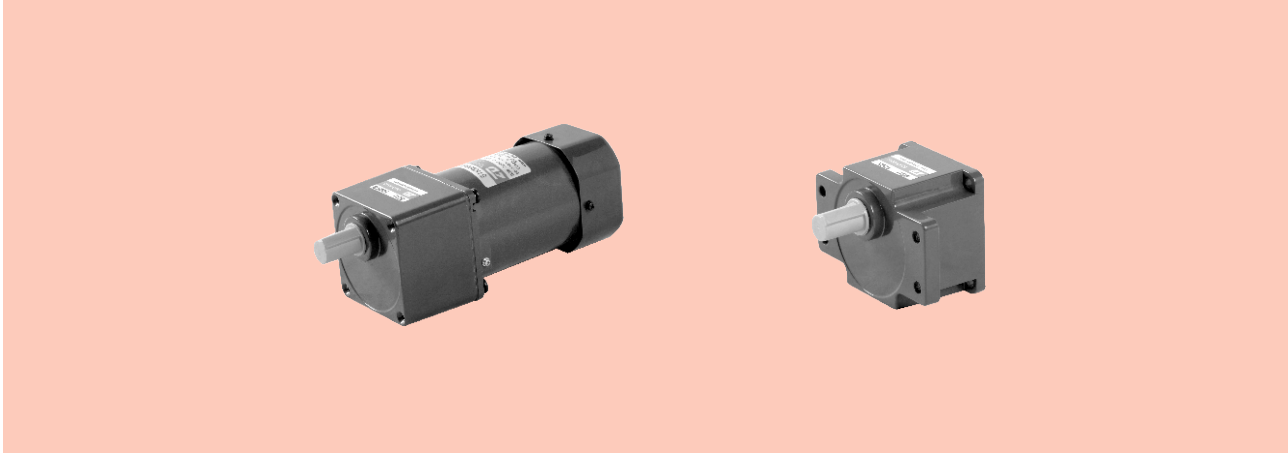


# 调速电动机 SPEED ADJUSTABLE MOTOR

■ 90W □ 90mm



## 规格 Specs 连续额定 Cont. Rated

| 型号Model · 类型 Type<br>导线型 Lead Wire Type |                    | 最大<br>输出功率<br>Output<br>power<br>W | 电压<br>Voltage<br>V | 频率<br>Frequency<br>Hz | 调速范围<br>Speed<br>Control<br>Range<br>r/min | 容许转矩<br>Allowance Torque |                 | 启动转矩<br>Starting<br>Torque<br>mN.m | 电流<br>Current<br>A | 电容器容量<br>Capacitor<br>μF |
|---|--------------------|------------------------------------|--------------------|-----------------------|--|--------------------------|-----------------|------------------------------------|--------------------|--------------------------|
| 齿轮轴型<br>Pinion Shaft                    | 圆轴型<br>Round Shaft |                                    |                    |                       |  | 1200r/min<br>mN.m        | 90r/min<br>mN.m |                                    |                    |                          |
| 5IK90RGU-AF                             | 5IK90RA-AF         | 90                                 | 1ph 100            | 50                    | 90~1350                                    | 710                      | 230             | 405                                | 1.55               | 25.0                     |
|   |                    |                                    |                    | 60                    | 90~1650                                    |                          | 260             |                                    | 1.85               |                          |
| 5IK90RGU-EF                             | 5IK90RA-EF         | 90                                 | 1ph 110            | 60                    | 90~1650                                    | 710                      | 260             | 410                                | 1.40               | 20.0                     |
|   |                    |                                    | 1ph 120            |                       |  |                          |                 |                                    | 1.45               |                          |
| 5IK90RGU-CF                             | 5IK90RA-CF         | 90                                 | 1ph 220            | 50                    | 90~1350                                    | 710                      | 230             | 410                                | 0.72               | 5.0                      |
|   |                    |                                    | 1ph 230            |                       |  |                          |                 |                                    | 0.70               |                          |
| 5IK90RGU-HF                             | 5IK90RA-HF         | 90                                 | 1ph 220            | 60                    | 90~1650                                    | 710                      | 260             | 410                                | 0.71               | 5.0                      |
|   |                    |                                    | 1ph 230            |                       |  |                          |                 |                                    | 0.75               |                          |

- 各种安全规格以电动机铭牌上的型号取得认证。  
When the motor is approved under various safety standards, the model name on the nameplate is the approved model name.
- 注：“-A”型号中电压为110V时，配置电容器容量以实际铭牌为准。  
Note: "-A" it means the voltage 110V, the assembly capacitor vaule it is according the labe.

## 种类 Type

- 电动机 Motor

| 机型<br>Type                  | 型号Model              |                    |
|-----------------------------|----------------------|--------------------|
|                             | 齿轮轴型<br>Pinion Shaft | 圆轴型<br>Round Shaft |
| 导线型<br>Lead<br>Wire<br>Type | 5IK90RGU-AF          | 5IK90RA-AF         |
|                             | 5IK90RGU-EF          | 5IK90RA-EF         |
|                             | 5IK90RGU-CF          | 5IK90RA-CF         |
|                             | 5IK90RGU-HF          | 5IK90RA-HF         |

- 平行轴减速器（另售）Parallel Shaft Gearhead (Sold Separately)

| 减速器种类<br>Gearhead Type              | 减速器型号<br>Gearhead Model          | 减速比<br>Gear Ratio  |
|-------------------------------------|----------------------------------|--|
| 长寿命●低噪音<br>Long Life ● Low<br>Noise | 5GU□K                            | 3、3.6、5、6、7.5、9、10、<br>12.5、15、18、20、25、30、<br>36、40、50、60、75、90、<br>100、120、150、180、200 |
|                                     | 5GU10XK (中间减速器 Decimal Gearhead) |  |

- 减速器型号的□中为减速比的数值  
Enter the gear ratio in the box (□) within the model name

## ■ 装有减速器时的容许转矩 Gear Motor-Torque Table

- 减速器另售·中间减速器另售。电动机型号的□中为表示带端子箱型的记号(T)。  
Gearhead and mid-gearbox can be sold separately. Enter the code that represents the terminal box type (T) in the box (□) within the model name.
- 减速品型号的□中为减速比的数值。  
Enter the gear ratio in the box (□) within the model name.
- 色表示与电动机同一方向运转，其他则为相反方向。  
The colored background □ indicates the same rotating direction of the motor while the rotating direction of others are opposite.
- 转速是以电动机的同步转速（50Hz：1500r/min、60Hz：1800r/min）为基准除以减速比而算出来的数值。实际转速将随负载大小变化所示数值减少2%~20%左右。  
The speed is calculated by dividing the motor's synchronous speed (50Hz：1500r/min、60Hz：1800r/min) by the gear ratio. The actual speed is 2%~20% less than the displayed value, depending on the size of the load.
- 希望以大于下表的减速比进行进一步减速时，可在电动机与减速机之间安装减速比为10的中间减速机。  
这时的容许转矩为20N·m。  
To reduce the speed beyond the gear ratio in the table, attach a decimal gearhead (gear ratio:10) between the gearhead and motor. In that case, the permissible torque is 20N·m.

## ■ 容许力矩单位 Allowance Torque Unit：上段 Upside ( N.m ) /下段 Belowside ( kgf.cm )

| 类型 Type<br>电动机/减速机<br>Motor/Gearhead                         | 减速比<br>Gear Ratio |      | 3    | 3.6  | 5    | 6    | 7.5  | 9    | 10   | 12.5 | 15   | 18   | 20   | 25   | 30   | 36   | 40   | 50   | 60   | 75   | 90   | 100  | 120  | 150  | 180  | 200  |      |      |
|--|-------------------|------|------|------|------|------|------|------|------|------|------|------|------|------|------|------|------|------|------|------|------|------|------|------|------|------|------|------|
|  | 转速<br>Speed r/min | 50Hz | 500  | 417  | 300  | 250  | 200  | 166  | 150  | 120  | 100  | 83   | 75   | 60   | 50   | 41   | 37   | 30   | 25   | 20   | 16   | 15   | 12.5 | 10   | 8.3  | 7.5  |      |      |
| 5IK90RGU-AF□<br>5IK90RGU-EF□<br>5IK90RGU-CF□<br>5IK90RGU-HF□ | 5GU□KB<br>5GU□K   | 50Hz | 1.70 | 2.00 | 2.80 | 3.40 | 4.30 | 5.10 | 5.31 | 6.40 | 7.70 | 9.20 | 9.55 | 11.6 | 13.6 | 16.6 | 18.1 | 20.0 | 20.0 | 20.0 | 20.0 | 20.0 | 20.0 | 20.0 | 20.0 | 20.0 | 20.0 |      |
|  |                   | 60Hz | 17.3 | 20.4 | 28.6 | 34.7 | 43.9 | 52.0 | 54.2 | 65.3 | 78.6 | 93.3 | 97.4 | 118  | 139  | 169  | 184  | 200  | 200  | 200  | 200  | 200  | 200  | 200  | 200  | 200  | 200  | 200  |
|  | 5GU□KB<br>5GU□K   | 50Hz | 1.40 | 1.70 | 2.50 | 2.80 | 3.50 | 4.20 | 4.43 | 5.20 | 6.20 | 7.50 | 7.81 | 9.40 | 11.3 | 13.5 | 14.5 | 18.8 | 20.0 | 20.0 | 20.0 | 20.0 | 20.0 | 20.0 | 20.0 | 20.0 | 20.0 | 20.0 |
|  |                   | 60Hz | 14.3 | 17.3 | 25.5 | 28.6 | 35.7 | 42.9 | 45.2 | 53.1 | 63.3 | 76.5 | 79.6 | 95.9 | 115  | 138  | 148  | 19.2 | 200  | 200  | 200  | 200  | 200  | 200  | 200  | 200  | 200  | 200  |

## ■ 容许悬挂负载·容许轴向负载 To Allow The Hoisting Of The Load Allow Axial Load

电动机（圆轴型）→P215      Motor (Round shaft) →P215  
减速机→P215      Gearhead→P215

## ■ 减速机的容许负载惯性惯量 J Permissible Load Inertia J For Gearhead

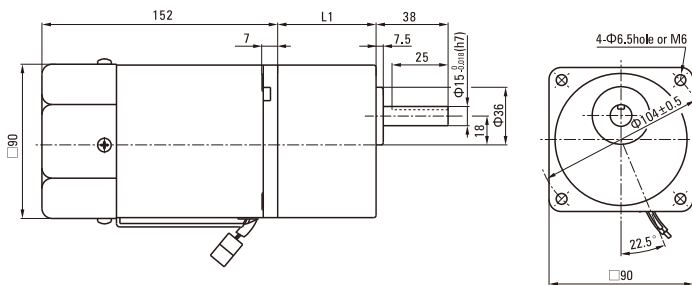
→P215页→P215

## ■ 外形图（单位 mm）Dimensions (Unit mm)

减速机附有安装用螺丝 Mounting screws are included with gearhead.

### ● 导线型 Lead Wiring Type

重量 Weight：电动机 Motor：3.3kg      减速机 Gearhead：1.5kg

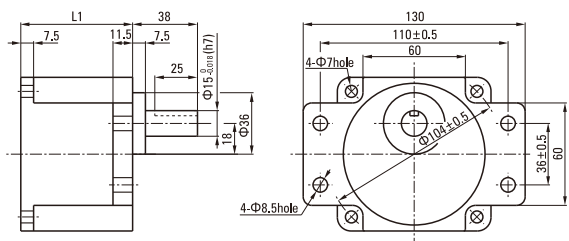


| 电动机型号<br>Motor Model                                     | 减速器型号<br>Gearhead Model | 减速比<br>Gear Ratio | L1   |
|--|-------------------------|-------------------|------|
| 5IK90RGU-AF<br>5IK90RGU-EF<br>5IK90RGU-CF<br>5IK90RGU-HF | 5GU□KB                  | 3~200             | 65.5 |

- 减速器型号的□中为减速比的数值  
Enter the gear ratio in the box (□) within the model name

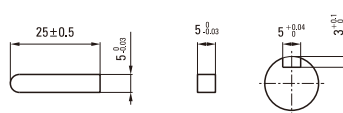
● 凸缘安装型减速器 Flange Mounting Reducer

可安装在GU齿轮轴型上  
Can be mounted on GU type gear shaft  
5GU□K  
重量Weight: 1.5kg



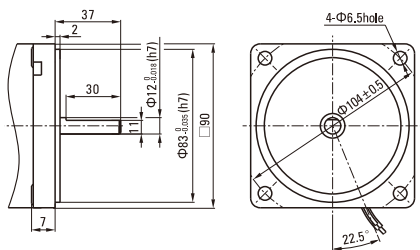
● 键·键槽 (减速器附件)

Key · Keyway (Accessory of Gearhead)



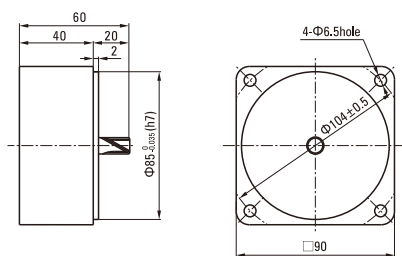
● 圆轴型的转轴部分 Shaft Section Of Round Shaft Type

除重量及轴部外电动机外形与齿轮轴型相同。  
Excluding weight and the shaft section motor shape are the same as those of the pinion shaft type.



● 中间减速器 Decimal Gearhead

可安装在GU齿轮轴型上 Can be connected to GU pinion shaft type  
电动机外形与齿轮轴型相同  
5GU10XK  
重量 Weight : 0.65kg



■ 连接图 Wiring Diagram

