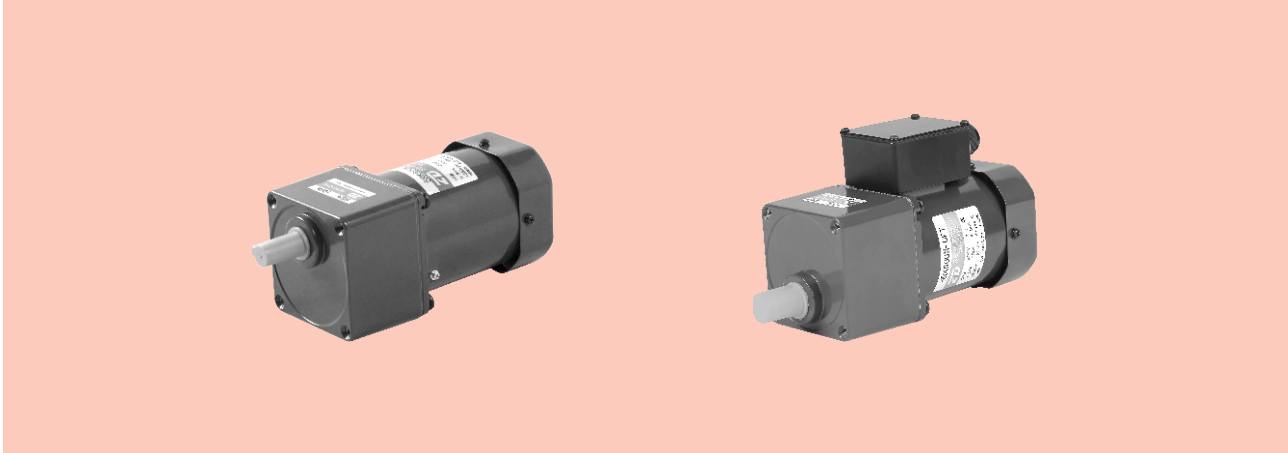


可逆电动机 REVERSIBLE MOTORS

60W □90mm



规格 Specs 30分钟额定 30 Minutes Rating

| 型号Model · 类型 Type 上段:齿轮轴 Upper:Pinion Shaft 下段()内:圆轴 Below:Round Shaft | | 输出功率 Output power W | 电压 Voltage V | 频率 Frequency Hz | 电流 Current A | 启动转矩 Starting Torque mN.m | 额定转矩 Rated Torque mN.m | 额定转速 Rated Speed r/min | 电容器容量 Capacitor μF |
|--|--|---------------------------|--------------------|-----------------------|--------------------|---------------------------------|------------------------------|------------------------------|--------------------------|
| 导线型 Lead Wire Type 外形图Dimensions① | 带端子箱型 Terminal Box Type 外形图Dimensions② | | | | | | | | |
| 5RK60GN-AF (5RK60A-AF) | 5RK60GN-AFT (5RK60A-AFT) | 60 | 1ph 100 | 50 | 1.26 | 470 | 470 | 1250 | 25.0 |
| | | | | 60 | 1.70 | | 380 | 1550 | |
| 5RK60GN-EF (5RK60A-EF) | 5RK60GN-EFT (5RK60A-EFT) | 60 | 1ph 110 1ph 120 | 60 | 1.05 | 330 | 380 | 1550 | 15.0 |
| | | | | | | 380 | | | |
| 5RK60GN-CF (5RK60A-CF) | 5RK60GN-CFT (5RK60A-CFT) | 60 | 1ph 220 1ph 230 | 50 | 0.55 | 420 | 470 | 1250 | 4.50 |
| | | | | | 0.60 | | | | |
| 5RK60GN-HF (5RK60A-HF) | 5RK60GN-HFT (5RK60A-HFT) | 60 | 1ph 220 1ph 230 | 60 | 0.55 | 420 | 380 | 1550 | 4.50 |
| | | | | | 0.60 | | | | |

- 各种安全规格以电动机铭牌上的型号名取得认证。
When the motor is approved under various safety standards, the model name on the nameplate is the approved model name.
- 注：“-A”型号中电压为110V时，配置电容器容量以实际铭牌为准。
Note:“-A” it means the voltage 110V, the assembly capacitor vaule it is according the labe.

种类 Type

- 电动机 Motor

| 机型 Type | 型号Model | |
|----------------------------|----------------------|--------------------|
| | 齿轮轴型 Pinion Shaft | 圆轴型 Round Shaft |
| 导线型 Lead Wire Type | 5RK60GN-AF | 5RK60A-AF |
| | 5RK60GN-EF | 5RK60A-EF |
| | 5RK60GN-CF | 5RK60A-CF |
| | 5RK60GN-HF | 5RK60A-HF |
| 带端子箱型 Terminal Box Type | 5RK60GN-AFT | 5RK60A-AFT |
| | 5RK60GN-EFT | 5RK60A-EFT |
| | 5RK60GN-CFT | 5RK60A-CFT |
| | 5RK60GN-HFT | 5RK60A-HFT |

- 平行轴减速器 (另售) Parallel Shaft Gearhead (Sold Separately)

| 减速器种类 Gearhead Type | 减速器型号 Gearhead Model | 减速比 Gear Ratio |
|----------------------------------|----------------------------------|--|
| 长寿命●低噪音 Long Life ● Low Noise | 5GN□K | 3、3.6、5、6、7.5、9、10、12.5、15、18、20、25、30、36、40、50、60、75、90、100、120、150、180、200 |
| | 5GN10XK (中间减速器 Decimal Gearhead) | |

- 减速器型号的□中为减速比的数值
Enter the gear ratio in the box (□) within the model name

■ 装有减速器时的容许转矩 Gear Motor-Torque Table

- 减速器另售·中间减速器另售。
Gearhead and mid-gearbox can be sold separately.
- 减速品型号的□中为减速比的数值。
Enter the gear ratio in the box (□) within the model name.
- □色表示与电动机同一方向运转，其他则为相反方向。
The colored background □ indicates the same rotating direction of the motor while the rotating direction of others are opposite.
- 转速是以电动机的同步转速（50Hz：1500r/min、60Hz：1800r/min）为基准除以减速比而算出来的数值。实际转速将随负载大小变化所示数值减少2%~20%左右。
The speed is calculated by dividing the motor's synchronous speed (50Hz：1500r/min、60Hz：1800r/min) by the gear ratio. The actual speed is 2%~20% less than the displayed value, depending on the size of the load.
- 希望以大于下表的减速比进行进一步减速时，可在电动机与减速机之间安装减速比为10的中间减速机。这时的容许转矩为10N·m。
To reduce the speed beyond the gear ratio in the table, attach a decimal gearhead (gear ratio:10) between the gearhead and motor. In that case, the permissible torque is 10N·m.

■ 容许力矩单位 Allowance Torque Unit：上段 Upside (N.m) /下段 Belowside (kgf.cm)

| 类型 Type 电动机/减速机 Motor/Gearhead | 减速比 Gear Ratio | | 3 | 3.6 | 5 | 6 | 7.5 | 9 | 10 | 12.5 | 15 | 18 | 20 | 25 | 30 | 36 | 40 | 50 | 60 | 75 | 90 | 100 | 120 | 150 | 180 | 200 | |
|--|-------------------|------|------|------|------|------|------|------|------|------|------|------|------|------|------|------|------|------|------|------|------|------|------|------|------|------|------|
| | 转速 Speed r/min | 50Hz | 500 | 417 | 300 | 250 | 200 | 166 | 150 | 120 | 100 | 83 | 75 | 60 | 50 | 41 | 37 | 30 | 25 | 20 | 16 | 15 | 12.5 | 10 | 8.3 | 7.5 | |
| 5RK60GN-AF□ 5RK60GN-EF□ 5RK60GN-CF□ 5RK60GN-HF□ | 5GN□K | 60Hz | 600 | 500 | 360 | 300 | 240 | 200 | 180 | 144 | 120 | 100 | 90 | 72 | 60 | 50 | 45 | 36 | 30 | 24 | 20 | 18 | 15 | 12 | 10 | 9 | |
| | | 50Hz | 1.10 | 1.40 | 1.90 | 2.30 | 2.90 | 3.40 | 3.57 | 4.80 | 5.70 | 6.80 | 7.03 | 8.60 | 10.0 | 10.0 | 10.0 | 10.0 | 10.0 | 10.0 | 10.0 | 10.0 | 10.0 | 10.0 | 10.0 | 10.0 | 10.0 |
| | | 11.2 | 14.2 | 19.3 | 23.4 | 29.6 | 34.7 | 36.4 | 48.9 | 58.1 | 69.3 | 71.7 | 87.7 | 100 | 100 | 100 | 100 | 100 | 100 | 100 | 100 | 100 | 100 | 100 | 100 | 100 | 100 |
| | | 60Hz | 0.92 | 1.10 | 1.50 | 1.80 | 2.30 | 2.80 | 2.99 | 3.80 | 4.60 | 5.50 | 5.70 | 6.90 | 8.30 | 10.0 | 10.0 | 10.0 | 10.0 | 10.0 | 10.0 | 10.0 | 10.0 | 10.0 | 10.0 | 10.0 | 10.0 |
| | | | 9.38 | 11.2 | 15.3 | 18.3 | 23.4 | 28.5 | 30.5 | 38.7 | 46.9 | 56.1 | 58.2 | 70.1 | 84.7 | 100 | 100 | 100 | 100 | 100 | 100 | 100 | 100 | 100 | 100 | 100 | |

■ 容许悬挂负载·容许轴向负载 To Allow The Hoisting Of The Load Allow Axial Load

电动机 (圆轴型) → P215 Motor (Round shaft) → P215
 减速机 → P215 Gearhead → P215

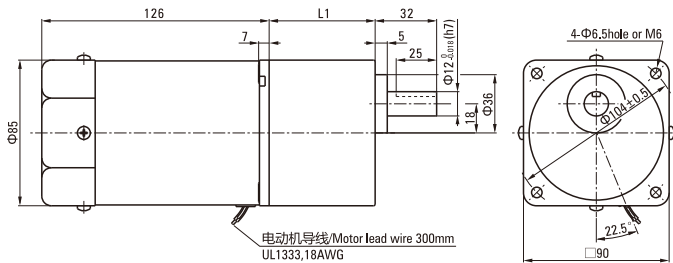
■ 减速机的容许负载惯性惯量 J Permissible Load Inertia J For Gearhead

→ P215页 → P215

■ 外形图 (单位 mm) Dimensions (Unit mm)

减速机附有安装用螺丝 Mounting screws are included with gearhead.

- 导线型 Lead Wiring Type ①
重量 Weight：电动机 Motor：2.75kg 减速机 Gearhead：1.35kg



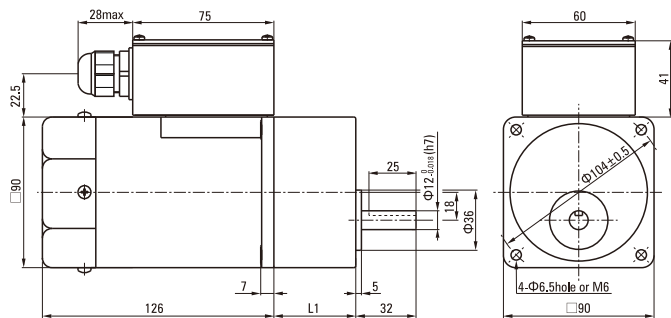
| 电动机型号 Motor Model | 减速机型号 Gearhead Model | 减速比 Gear Ratio | L1 |
|--|-------------------------|-------------------|----|
| 5RK60GN-AF 5RK60GN-EF 5RK60GN-CF 5RK60GN-HF | 5GN□K | 3~200 | 60 |

- 减速机型号的□中为减速比的数值
Enter the gear ratio in the box (□) within the model name
- 减速比3~18可以做成短箱体 (L1=42)
Gear ratio 3~18, short case is possible (L1=42)

● 带端子箱型 Terminal Box Type ②

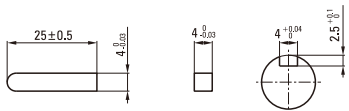
重量 Weight : 电动机 Motor : 2.9kg

减速器 Gearhead : 1.35kg



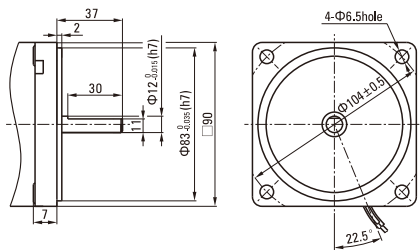
● 适用电缆直径为 Use cable with a diameter of $\Phi 6 \sim \Phi 12$ mm

● 键·键槽 (减速器附件) Key · Keyway (Accessory Of Gearhead)



● 圆轴型的转轴部分 Shaft Section Of Round Shaft Type

除重量及轴部外电动机外形与齿轮轴型相同。
Excluding weight and the shaft section motor shape are the same as those of the pinion shaft type.

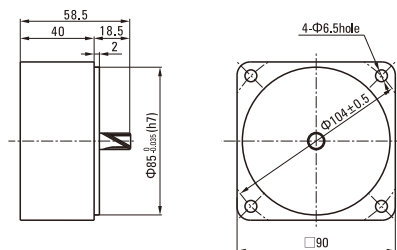


| 电动机型号 Motor Model | 减速器型号 Gearhead Model | 减速比 Gear Ratio | L1 |
|----------------------|-------------------------|-------------------|----|
| 5RK60GN-AFT | 5GN□K | 3~200 | 60 |
| 5RK60GN-EFT | | | |
| 5RK60GN-CFT | | | |
| 5RK60GN-HFT | | | |
| 5RK60GN-SFT | | | |

- 减速器型号的□中为减速比的数值
Enter the gear ratio in the box (□) within the model name
- 减速比3~18可以做成短箱体 (L1=32)
Gear ratio 3~18, short case is possible (L1=32)

● 中间减速器 Decimal Gearhead

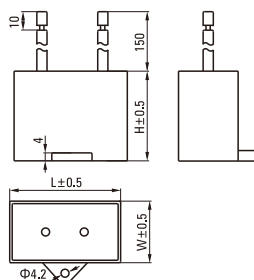
可安装在GN齿轮轴型上 Can be connected to GN pinion shaft type
电动机外形与齿轮轴型相同
5GN10XK
重量 Weight : 0.6kg



■ 电容器外形尺寸 Formal Dimension Of Capacitor

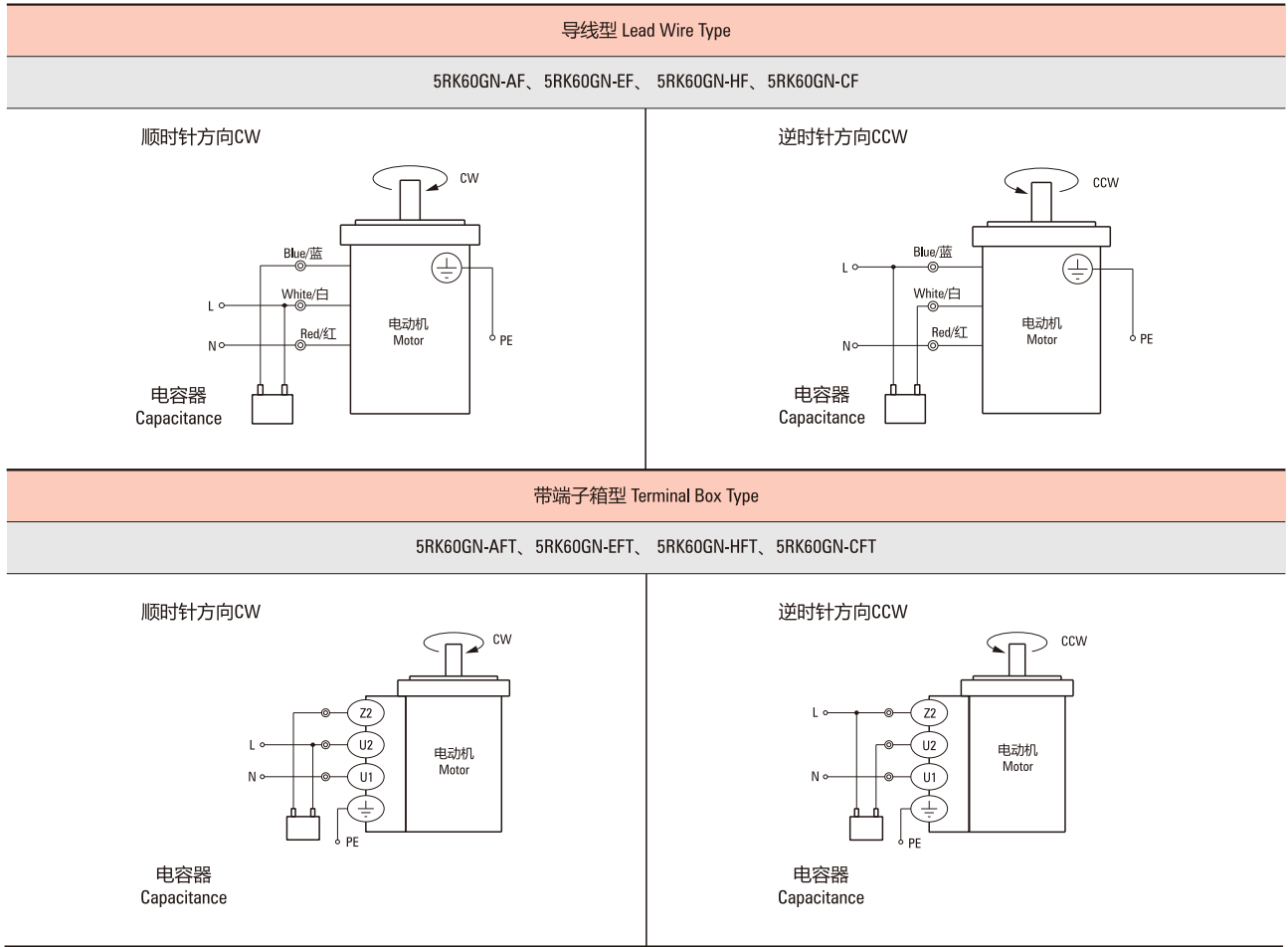
| 型号 Model | | 电容器型号 Capacitor Model | L | W | H |
|----------------------|--------------------|--------------------------|----|----|----|
| 齿轮轴型 Pinion Shaft | 圆轴型 Round Shaft | | | | |
| 5RK60GN-AF | 5RK60A-AF | ZD250CFAUL | 47 | 27 | 37 |
| 5RK60GN-EF | 5RK60A-EF | ZD150CFAUL | 47 | 20 | 31 |
| 5RK60GN-CF | 5RK60A-CF | ZD45BFAUL | 47 | 19 | 31 |

- 常规电容器出线为引线,也可根据客户要求配置插片式187#
Note: Conventional capacitor is a lead wire type. Inserted 187# is optional
- 电动机型号的□中为表示带端子箱型的记号(T)
Enter the code that represents the terminal box type (T) in the box (□) within the model name



连接图 Wiring Diagram

- 运转方向指从电动机轴看来的方向。CW表示顺时针方向，CCW表示逆时针方向。
The direction of motor rotation is as viewed from the shaft end of motor. CW represents the clockwise direction, while CCW represents the counterclockwise direction.
- 表中所记品名为齿轮轴型，圆轴型亦同。
Name indicated in the list is pinion shaft type, also valid for the equivalent round shaft type.



请注意 Note:

单相电动机运转方向的转换应在电动机停止后进行。

Change the direction of single-phase motor rotation only after bring the motor to a stop.

若在电动机运转时转换运转方向，可能发生无法转换运转方向或须费时较久的情况。

If an attempt is made to change the direction of rotation while the motor is rotating, motor may ignore reversing command or change its direction of rotation after some delay.