

规格 Specifications

● 3W、6W、10W、20W

型号 Model · 类型 Type 导线型 Lead Wire Type		使用额定 (堵转) Rating At Locked Rotor	电压 Voltage V	频率 Frequency Hz	起动转矩 Starting Torque mN.m	最大输出 功率 Max. Output Power W	最大输出功 率时转速 Speed At Max. Output Power r/min	最大输出功 率时转矩 Torque At Max. Output Power mN.m	电容器容量 Capacitor μF
齿轮轴型 Pinion Shaft	圆轴型 Round Shaft								
2TK3GN-A	2TK3A-A	5min 连续 Cont	110	50	69	3.2	750	41	7.0/250
			60		25	1.3		16	
		5min 连续 Cont	110	60	69	3.2	900	37	
			60		25	1.3		11	
2TK3GN-C	2TK3A-C	5min 连续 Cont	220	50	69	3.2	750	41	1.5/450
			140		25	1.2		16	
		5min 连续 Cont	220	60	69	3.2	900	37	
			140		25	1.2		11	
3TK6GN-A	3TK6A-A	5min 连续 Cont	110	50	134	6.0	750	80	8.0/250
			60		68	2.5		36	
		5min 连续 Cont	110	60	134	6.5	900	74	
			60		68	2.8		30	
3TK6GN-C	3TK6A-C	5min 连续 Cont	220	50	134	6.0	750	80	2.0/450
			140		68	2.5		36	
		5min 连续 Cont	220	60	134	6.5	900	74	
			140		68	2.8		30	
4TK10GN-A	4TK10A-A	5min 连续 Cont	110	50	235	10	750	127	10.0/250
			60		74	3.0		46	
		5min 连续 Cont	110	60	25	10	900	127	
			60		69	3.0		38	
4TK10GN-C	4TK10A-C	5min 连续 Cont	220	50	265	10	750	127	2.5/450
			140		98	3.0		46	
		5min 连续 Cont	220	60	225	10	900	127	
			140		90	3.0		38	
5TK20GN-A	5TK20A-A	5min 连续 Cont	110	50	363	20	750	224	15.0/250
			60		137	6.0		76	
		5min 连续 Cont	110	60	294	26	900	216	
			60		108	6.0		64	
5TK20GN-C	5TK20A-C	5min 连续 Cont	220	50	363	20	750	224	3.5/450
			140		137	6.0		76	
		5min 连续 Cont	220	60	294	26	900	216	
			140		108	6.0		64	

●各种安全规格以电动机铭牌上的型号取得认证。

When the motor is approved under various safety standards, the model name on the nameplate is the approved model name.

说明
Explain感应电动机
Induction Motor可逆电动机
Reversible Motors刹车电动机
Brake Motors调速电动机
Speed Control Motors转矩电动机
Torque Motors

种类 Type

● 电动机 Motor

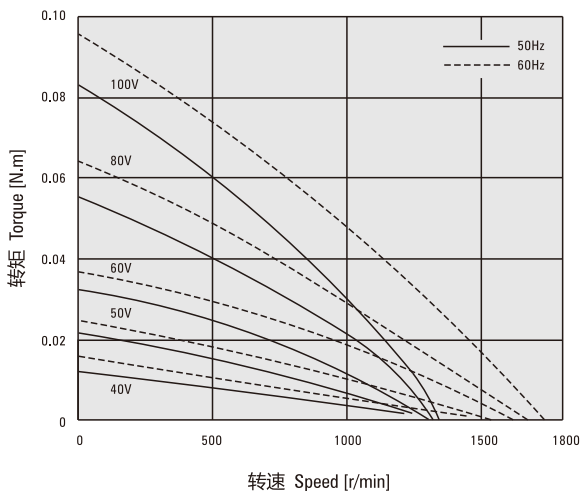
机型 Type	型号 Model	
	齿轮轴型 Pinion Shaft	圆轴型 Round Shaft
3W	2TK3GN-A	2TK3A-A
	2TK3GN-C	2TK3A-C
6W	3TK6GN-A	3TK6A-A
	3TK6GN-C	3TK6A-C
10W	4TK10GN-A	4TK10A-A
	4TK10GN-C	4TK10A-C
20W	5TK20GN-A	5TK20A-A
	5TK20GN-C	5TK20A-C

适用电动机输出功率 (齿轮轴) Applicable Motor Output Power (Pinion Shaft Type)	减速器型号 Gearhead Model	减速比 Gear Ratio
3W	2GN□K	3、3.6、5、6、7.5、9、10、 12.5、15、18、20、25、30、 36、40、50、60、75、90、 100、120、150、180、200
	2GN10XK (中间减速器 Decimal gearhead)	
6W	3GN□K	3、3.6、5、6、7.5、9、10、 12.5、15、18、20、25、30、 36、40、50、60、75、90、 100、120、150、180、200
	3GN10XK (中间减速器 Decimal gearhead)	
10W	4GN□K	3、3.6、5、6、7.5、9、10、 12.5、15、18、20、25、30、 36、40、50、60、75、90、 100、120、150、180、200
	4GN10XK (中间减速器 Decimal gearhead)	
20W	5GN□K	3、3.6、5、6、7.5、9、10、 12.5、15、18、20、25、30、 36、40、50、60、75、90、 100、120、150、180、200
	5GN10XK (中间减速器 Decimal gearhead)	

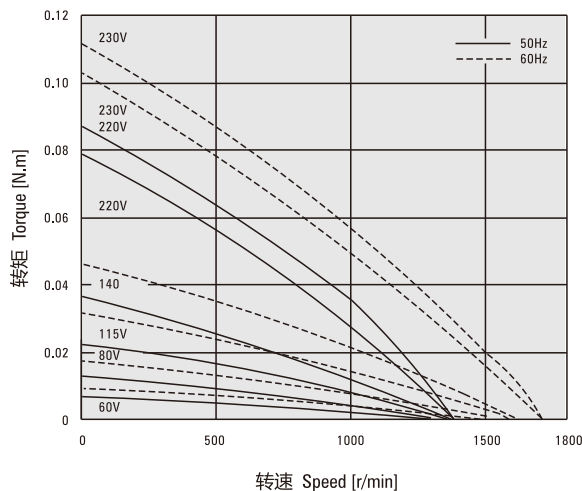
● 减速器型号的□中为减速比的数值
Enter the gear ratio in the box (□) within the model name

转速-转矩特性 (参考值) Speed - Torque Characteristics (Reference Values)

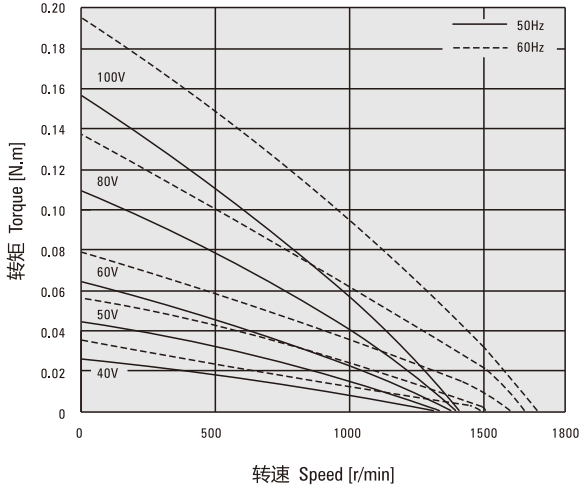
● 2TK3GN-A、2TK3A-A



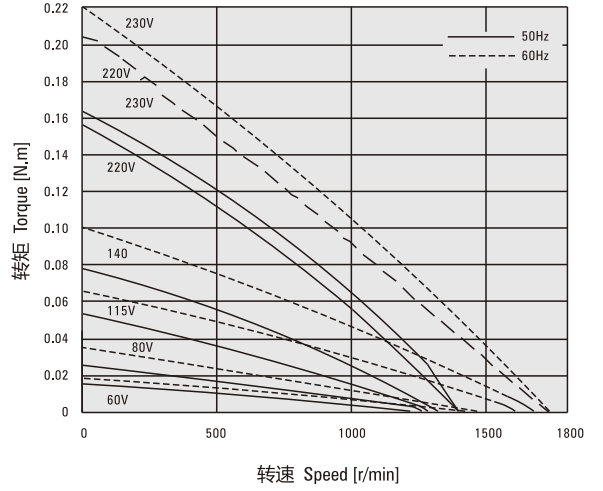
● 2TK3GN-C、2TK3A-C



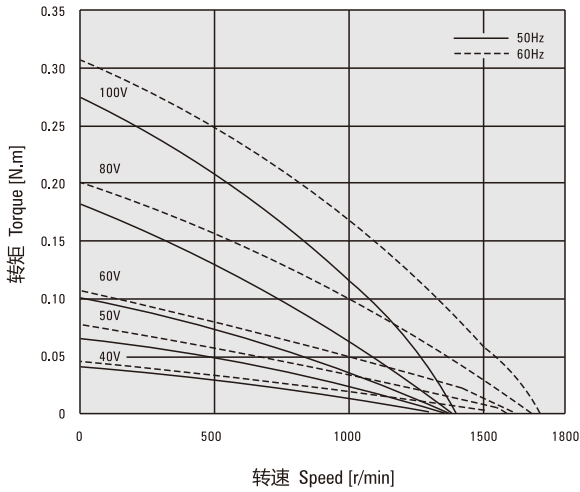
● 3TK6GN-A、3TK6A-A



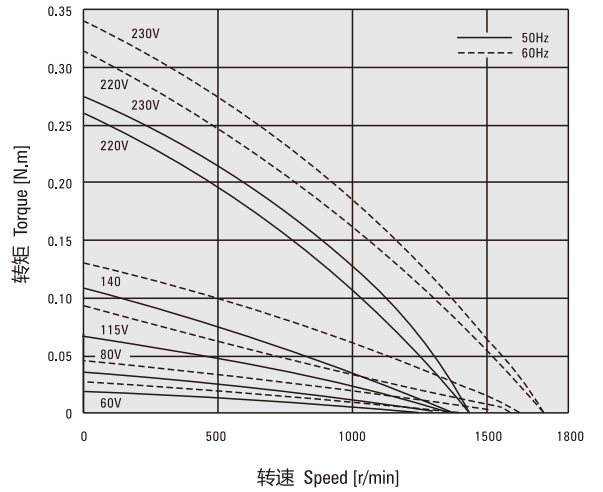
● 3TK6GN-C、3TK6A-C



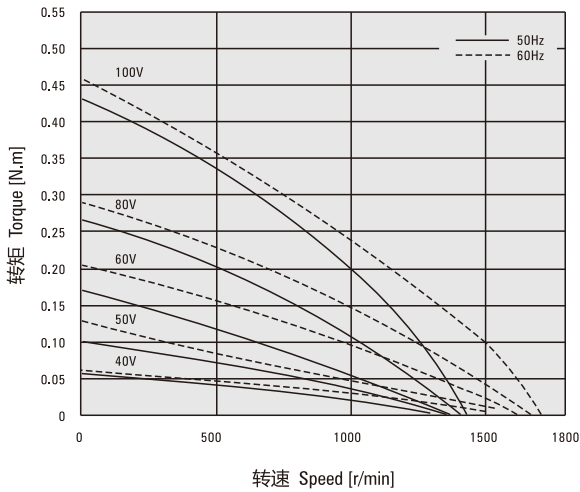
● 4TK10GN-A、4TK10A-A



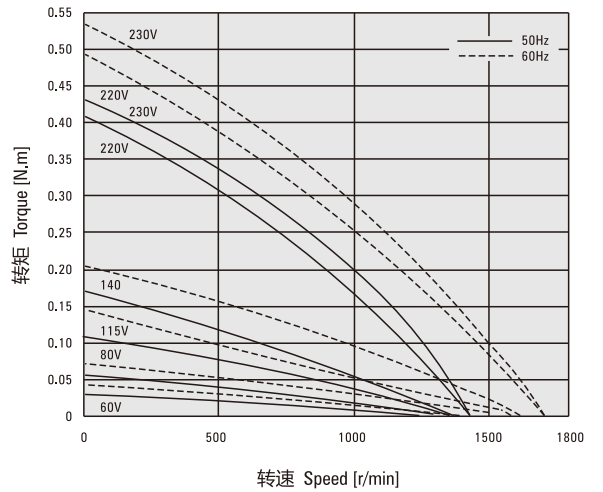
● 4TK10GN-C、4TK10A-C



● 5TK20GN-A、5TK20A-A



● 5TK20GN-C、5TK20A-C



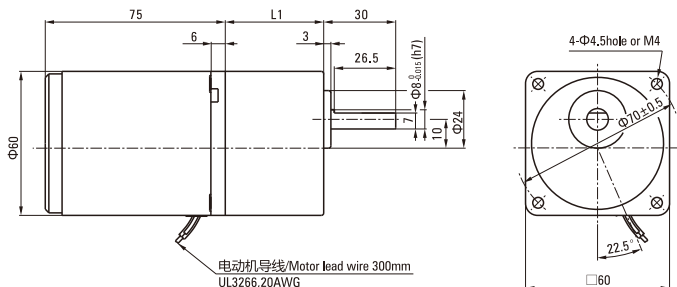
外形图 (单位 mm) Dimensions (Unit mm)

减速器附有安装用螺丝 Mounting screws are included with gearhead.

● 3W

● 电动机/减速器 Motor/Gearhead

重量 Weight : 电动机 Motor : 0.75kg 减速器 Gearhead : 0.4kg

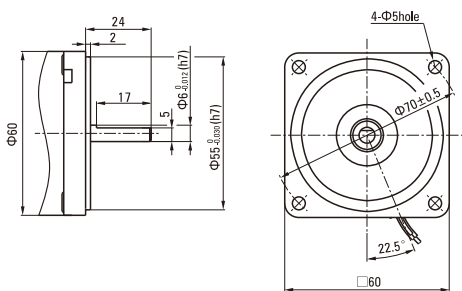


● 圆轴型的转轴部分 Shaft Section Of Round Shaft Type

2TK3A-A 2TK3A-C

除重量及轴部外电动机外形与齿轮轴型相同。

Excluding weight and the shaft section motor shape are the same as those of the pinion shaft type.



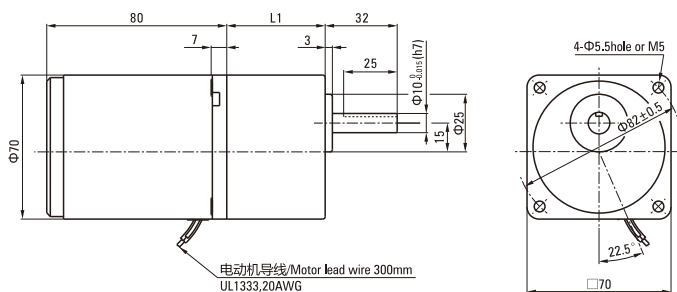
外形图 (单位 mm) Dimensions (Unit mm)

减速器附有安装用螺丝 Mounting screws are included with gearhead.

● 6W

● 电动机/减速器 Motor/Gearhead

重量 Weight : 电动机 Motor : 1.1kg 减速器 Gearhead : 0.5kg



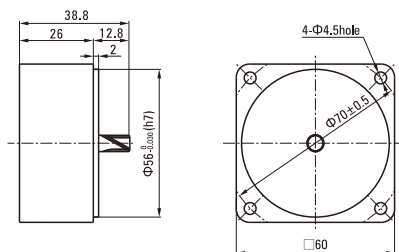
电动机型号 Motor Model	减速器型号 Gearhead Model	减速比 Gear Ratio	L1
2TK3GN-A 2TK3GN-C	2GN□K	3~200	41.5

- 减速器型号的□中为减速比的数值
Enter the gear ratio in the box (□) within the model name
- 减速比3~18可以做成短箱体 (L1=32)
Gear ratio 3~18, short case is possible (L1=32)

● 中间减速器 Decimal Gearhead

可安装2TK3GN型 Can be connected to 2TK3GN type
2GN10XK

重量 Weight : 0.24kg

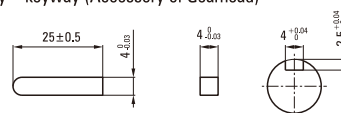


电动机型号 Motor Model	减速器型号 Gearhead Model	减速比 Gear Ratio	L1
3TK6GN-A 3TK6GN-C	3GN□K	3~200	42

- 减速器型号的□中为减速比的数值
Enter the gear ratio in the box (□) within the model name
- 减速比3~18可以做成短箱体 (L1=32)
Gear ratio 3~18, short case is possible (L1=32)

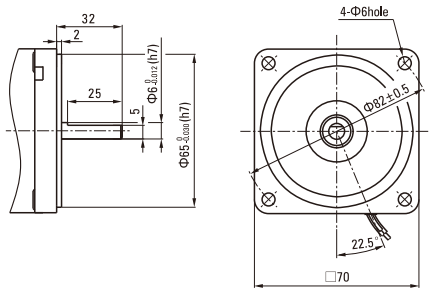
● 键·键槽 (减速器附件)

Key · Keyway (Accessory of Gearhead)



● 圆轴型的转轴部分 Shaft Section Of Round Shaft Type
3TK6A-A 3TK6A-C

除重量及轴部外电动机外形与齿轮轴型相同。
Excluding weight and the shaft section motor shape are the same as those of the pinion shaft type.



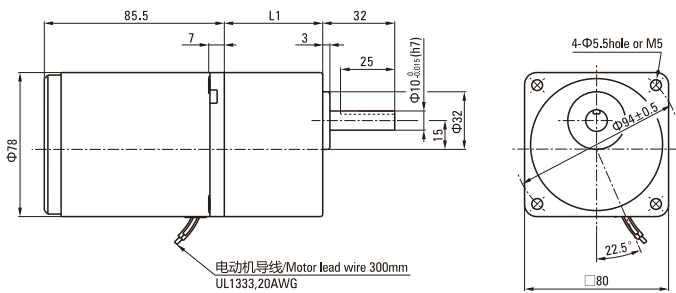
■ 外形图 (单位 mm) Dimensions (Unit mm)

减速器附有安装用螺丝 Mounting screws are included with gearhead.

● 10W

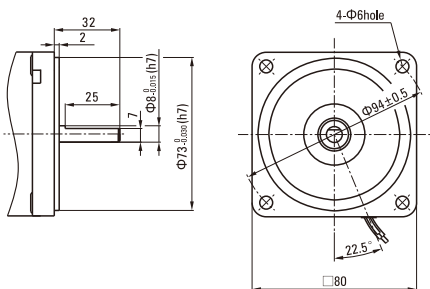
● 电动机/减速器 Motor/Gearhead

重量 Weight : 电动机 Motor : 1.6kg 减速器 Gearhead : 0.8kg



● 圆轴型的转轴部分 Shaft Section Of Round Shaft Type
4TK10A-A 4TK10A-C

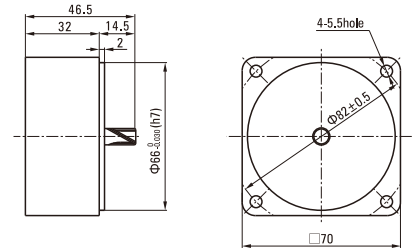
除重量及轴部外电动机外形与齿轮轴型相同。
Excluding weight and the shaft section motor shape are the same as those of the pinion shaft type.



● 中间减速器 Decimal Gearhead

可安装3TK6GN型 Can be connected to 3TK6GN type
3GN10XK

重量 Weight : 0.31kg

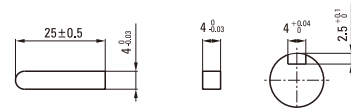


电动机型号 Motor Model	减速器型号 Gearhead Model	减速比 Gear Ratio	L1
4TK10GN-A 4TK10GN-C	4GN□K	3~200	43.5

- 减速器型号的□中为减速比的数值
Enter the gear ratio in the box (□) within the model name
- 减速比3~18可以做成短箱体 (L1=32)
Gear ratio 3~18, short case is possible (L1=32)

● 键·键槽 (减速器附件)

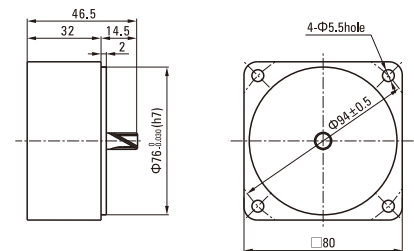
Key · Keyway (Accessory Of Gearhead)



● 中间减速器 Decimal Gearhead

可安装4TK10GN型 Can be connected to 4TK10GN type
4GN10XK

重量 Weight : 0.41kg



外形图 (单位 mm) Dimensions (Unit mm)

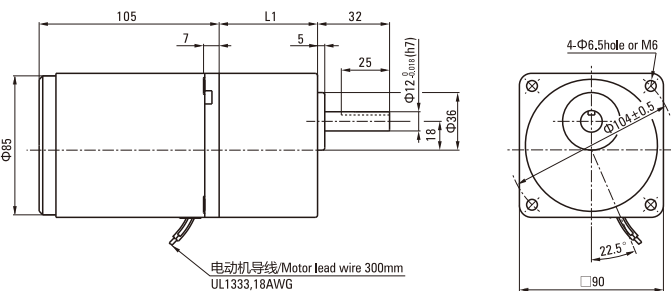
减速器附有安装用螺丝 Mounting screws are included with gearhead.

● 20W

● 电动机/减速器 Motor/Gearhead

重量 Weight : 电动机 Motor : 2.4kg

减速器 Gearhead : 1.35kg



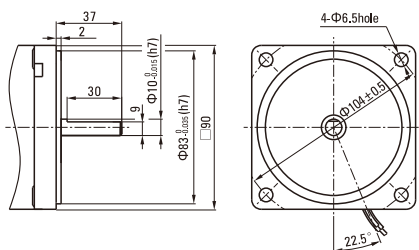
电动机导线/Motor lead wire 300mm
UL1333, 18AWG

● 圆轴型的转轴部分 Shaft Section Of Round Shaft Type

5TK20A-A 5TK20A-C

除重量及轴部外电动机外形与齿轮轴型相同。

Excluding weight and the shaft section motor shape are the same as those of the pinion shaft type.



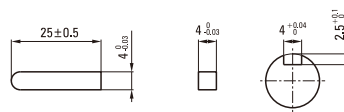
电动机型号 Motor Model	减速器型号 Gearhead Model	减速比 Gear Ratio	L1
5TK20GN-A 5TK20GN-C	5GN□K	3~200	60

● 减速器型号的□中为减速比的数值
Enter the gear ratio in the box (□) within the model name

● 减速比3~18可以做成长箱体 (L1=32)
Gear ratio 3~18, short case is possible (L1=32)

● 键·键槽 (减速器附件)

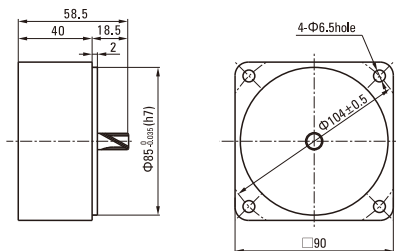
Key · Keyway (Accessory Of Gearhead)



● 中间减速器 Decimal Gearhead

可安装5TK20GN型 Can be connected to 5TK20GN type
5GN10XK

重量 Weight : 0.6kg



电容器外形尺寸 Formal Dimension Of Capacitor

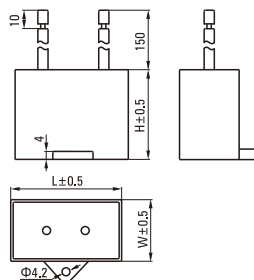
型号Model		电容器型号 Capacitor Model	L	W	H
齿轮轴型 Pinion Shaft	圆轴型 Round Shaft				
2TK3GN-A	2TK3A-A	ZD70CFAUL	47	24.0	37
		ZD60CFAUL	48	23.0	32
3TK6GN-A	3TK6A-A	ZD80CFAUL	48	26.5	38
		ZD70CFAUL	47	24.0	37
4TK10GN-A	4TK10A-A	ZD100CFAUL	58	26.0	38
		ZD80CFAUL	48	26.5	38
5TK20GN-A	5TK20A-A	ZD150CFAUL	58	32.0	43
		ZD120CFAUL	58	30.0	40
2TK3GN-C	2TK3A-C	ZD15BFAUL	36	12.5	24
		ZD12BFAUL	36	12.0	22
3TK6GN-C	3TK6A-C	ZD20BFAUL	36	15.0	25
		ZD15BFAUL	36	12.5	24
4TK10GN-C	4TK10A-C	ZD25BFAUL	38	17.0	28
		ZD20BFAUL	36	15.0	25
5TK20GN-C	5TK20A-C	ZD35BFAUL	38	19.5	31
		ZD30BFAUL	38	18.5	29

● 常规电容器出线为引线,也可根据客户要求配置插片式187#

Note: Conventional capacitor is a lead wire type. Inserted 187# is optional

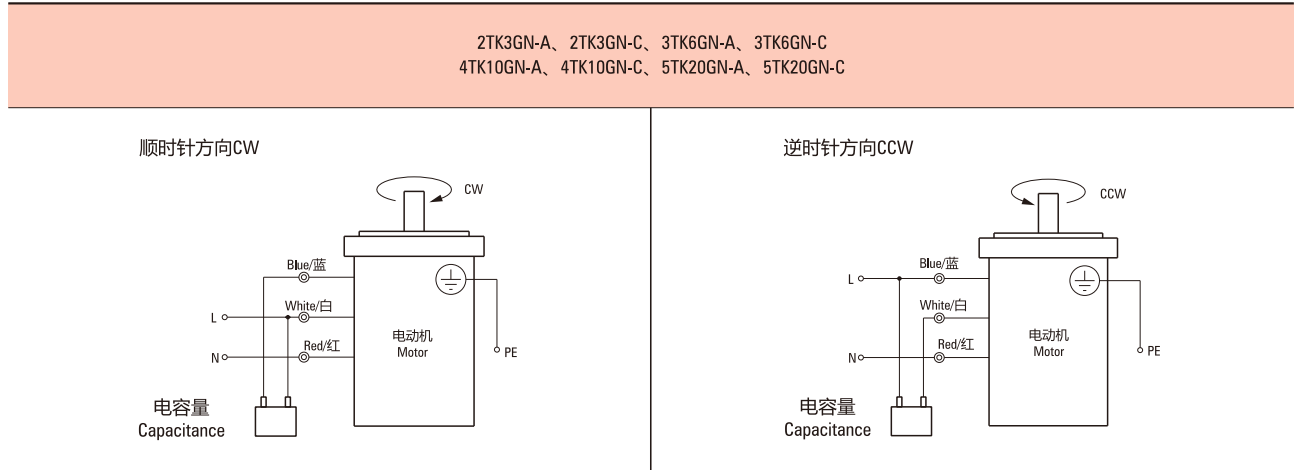
● 电动机型号的□中为表示带端子箱型的记号(T)

Enter the code that represents the terminal box type (T) in the box (□) within the model name



■ 连接图 Wiring Diagram

- 运转方向指从电动机轴看来的方向。CW表示顺时针方向，CCW表示逆时针方向。
The direction of motor rotation is as viewed from the shaft end of motor. CW represents the clockwise direction, while CCW represents the counterclockwise direction.
- 表中所记品名为齿轮轴型，圆轴型亦同。
Name indicated in the list is pinion shaft type, also valid for the equivalent round shaft type.
- 品名的□中为附属电容器种类的J、U或E记号。
Specify the type of the capacitor to be included by entering J、U or E in the box (□) within the model name.



请注意 Note:

单相电动机运转方向的转换应在电动机停止后进行。

Change the direction of single-phase motor rotation only after bring the motor to a stop.

若在电动机运转时转换运转方向，可能发生无法转换运转方向或须费时较久的情况。

If an attempt is made to change the direction of rotation while the motor is rotating, motor may ignore reversing command or change its direction of rotation after some delay.