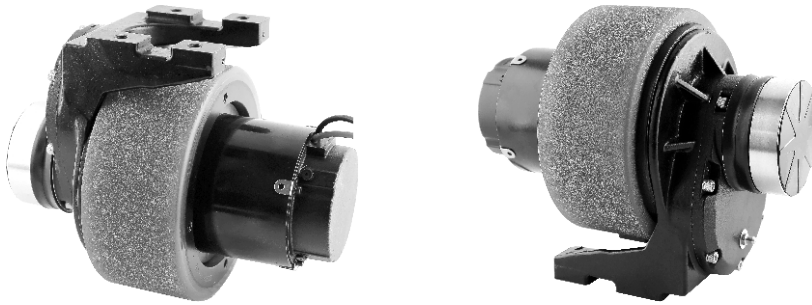
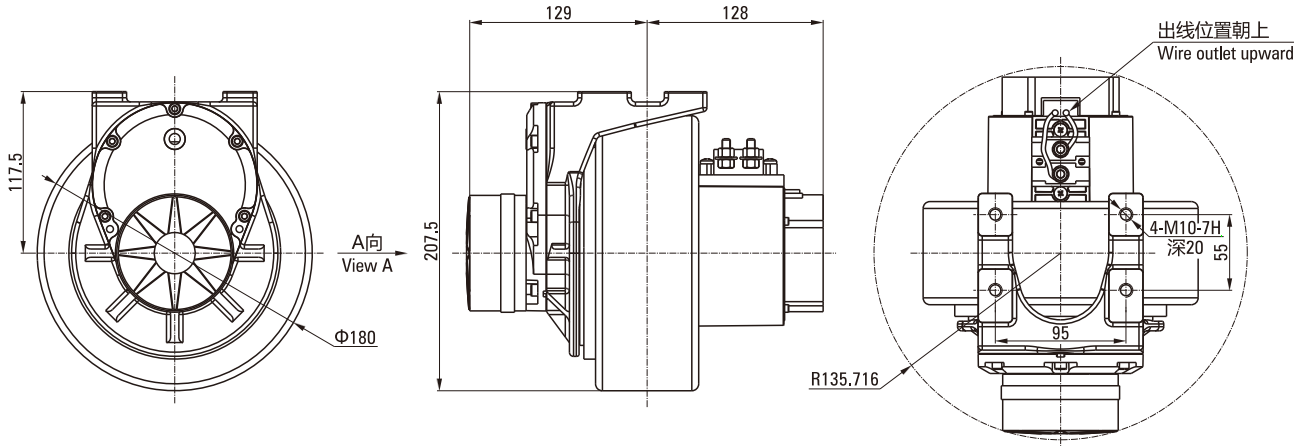


180有刷驱动轮 180 BRUSHED DRIVE WHEEL

Z100D550-24A1-30S/ZH180-25-001



电机基本性能参数表 Motor Basic Parameter Table

型号 Type	Z100D550-24A1-30S	防护等级 Protection grade	IP20
额定电压 Rated voltage	24V DC	减速器型号 Reducer model	ZD-ZH180-25-001
额定功率 Rated power	550W	减速器速比 Reduction ratio	25K/17K
额定电流 Rated current	30A±10%	刹车电压 Brake voltage	24V DC
额定转速 Rated speed	3000rpm±10%	刹车力矩 Brake torque	6N.m
额定力矩 Rated torque	1.75N.m	使用环境温度 Ambient temperature	-10°C~+40°C
空载电流 Noload current	≤6A	噪音 Noise	<60dB(L=100cm)
空载转速 Noload speed	3500rpm±10%	电机接线图 Wire diagram A向 view A	
工作制 Work duty	S2(45min)		
绝缘电阻 Insulation resistance	>20MΩ		
电刷寿命 Brush life	1200h		
电气强度 Electrical strength	660V/S		
绝缘等级 Insulation class	F		

技术要求 Technical Requirement

- 电机基本参数如图所示；
The basic parameters of the motor are shown in the table;
- 红色引线接正和黑色引接负，从刹车安装端着驱动轮顺时针转，引线位置对调，驱动轮的转向相反；
The red lead is connected to the positive and the black lead is connected to the negative. Seen from the brake installation end, the drive wheel turns clockwise. When the lead position is reversed, the drive wheel turns in the opposite direction;
- 整机应能运转平稳，声音和谐，无杂音等不良；
The whole machine should be able to run smoothly, the sound is harmonious, and there is no bad noise such as noise;
- 紧固件联接牢固，拧紧要到位，不得有打滑现象，要加涂螺纹胶；
Fasteners are firmly connected, tightened in place, no slippage, and threaded glue should be applied;
- 轮子使用防滑轮。The wheels use non-slip wheels.