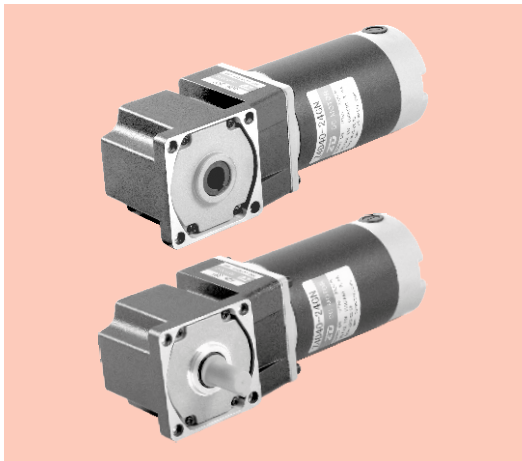


弧锥直角 SPIRAL BEVEL RIGHT ANGLE

40W □80mm



装有减速器时的容许转矩 Gear Motor-torque Table

- 减速器-中间减速器另售。
Gearhead and mid-gearbox can be sold separately.
- 减速器品号的□中为减速比的数值。
Enter the reduction ratio into the blank (□) within the model name.
 - 色表示分别从电动机轴轴端和减速器轴轴端看时, 电机轴与输出轴转向反方向运转。其他则为同一方向运转。
 - Indicates the opposite rotating direction between motor shaft and gearbox shaft while others are in same direction.
- 转速是以电动机的额定转速为基准除以减速比而算出来的数值。实际转速将随负载大小变化而比所示数值减少2%~20%左右。
The speed is calculated by dividing the motor's synchronous speed by the reduction ratio. The actual speed is 2%~20% less than the displayed value, depending on the size of the load.
- 希望以大于下表的减速比进行进一步减速时, 可在电动机与减速器之间安装减速比为10的中间减速器。这时的容许转矩为8N·m。
To reduce the speed beyond the gear ratio in the table, attach a mid-gearbox (gear ratio:10) between the gearhead and motor. In that case, the permissible torque is 8N·m.

容许力矩单位 Allowance Torque Unit: 上段 Upside (N.m) / 下段 Belowside (kgf.cm)

类型 Type 电动机/减速机 Motor/Gearhead	减速比 Gear Ratio	7.5	9	12.5	15	18	25	30	36	50	60	75	90	100	120	150	180
	转速 Speed r/min	400	333	240	200	166	120	100	83	60	50	40	33	30	25	20	16
Z4D40-24GN-30S	4GN□RC	0.70	0.84	1.16	1.39	1.67	2.32	2.78	3.34	4.64	5.01	6.27	7.52	80.0	80.0	80.0	80.0
	4GN□RT	7.14	8.57	11.8	14.2	17.0	23.7	28.4	34.1	47.3	51.1	64.0	76.7	80.0	80.0	80.0	80.0

外形图 (单位: mm) Dimensions (Unit: mm)

