

电动机 ELECTRIC MOTOR

400W

- 平行轴减速机 Parallel shaft speed reducer

型号 Model number	电机型号 Motor type	减速机型号 Type of reducer	减速比 Deceleration ratio	L
Z5BLD400-220GSL-30S/5GU□SL	Z5BLD400-220GSL-30S	5GU□SL	5 ~ 50	67.5

注Note : □——速比数值 Velocity ratio value

SL系列整机容许力矩 Machine allowable torque

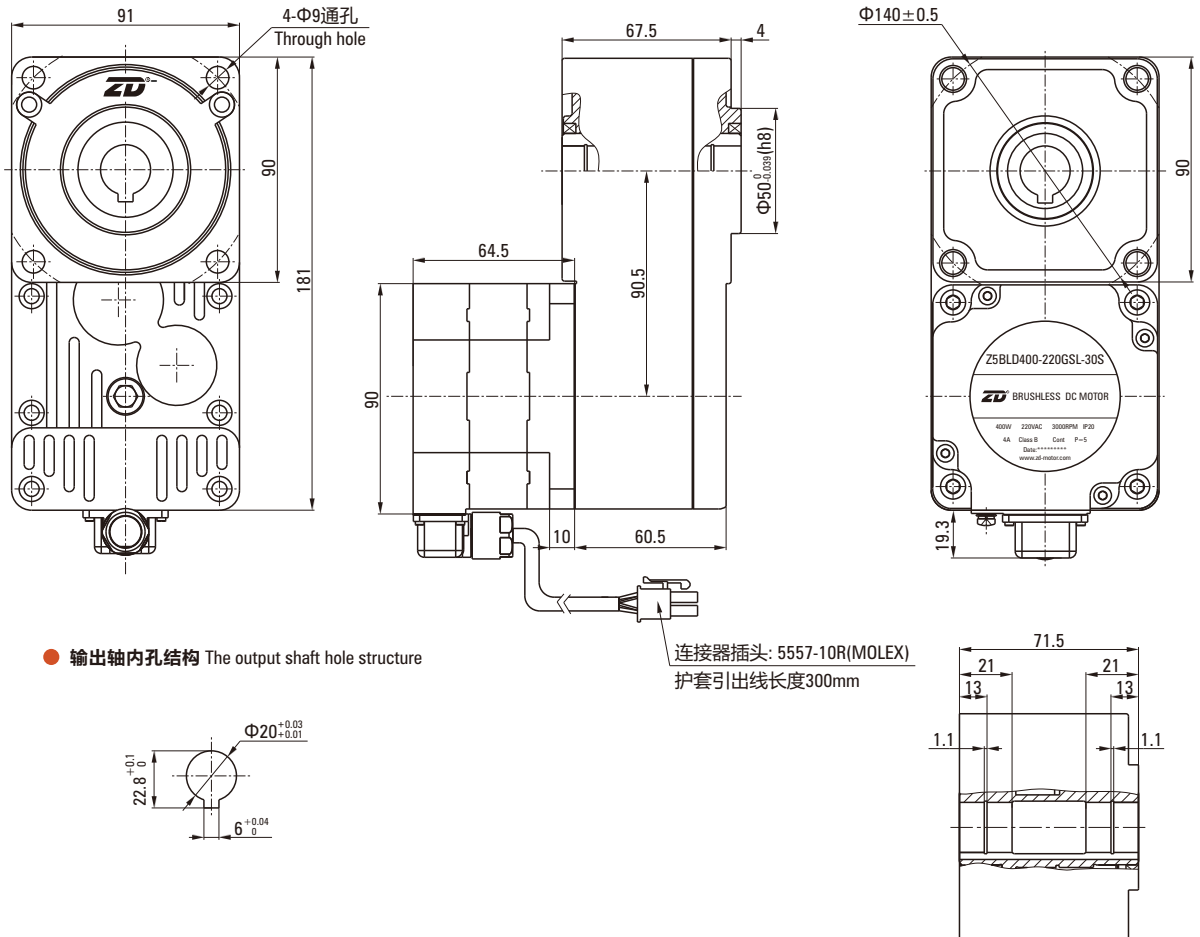
- 平行轴减速机 Parallel shaft speed reducer

单位Unit: N·m

输出功率 Output power	电机轴转速 Motor speed	减速比 Reduction ratio								
		5	7.5	10	15	20	25	30	40	50
400W	80 ~ 2000r/min时	6.97	10.46	13.94	20.91	27.89	34.86	41.83	46.48	46.48
	3000r/min时	4.65	6.97	9.30	13.94	18.59	23.24	27.89	37.18	46.48
	4000r/min时	3.49	5.23	6.97	10.46	13.94	17.43	20.91	27.89	34.86

注Note : 表格中所有旋转方向与电机转向相反。All rotation directions in the table are opposite to motor steering.
(不同转速及速比下的力矩为ZD标准驱动器下测试所得。The torque under different speed and speed ratio is obtained under the ZD standard)

外观尺寸图 Dimensional drawing



- 输出轴内孔结构 The output shaft hole structure

连接器插头: 5557-10R(MOLEX)
护套引出线长度300mm