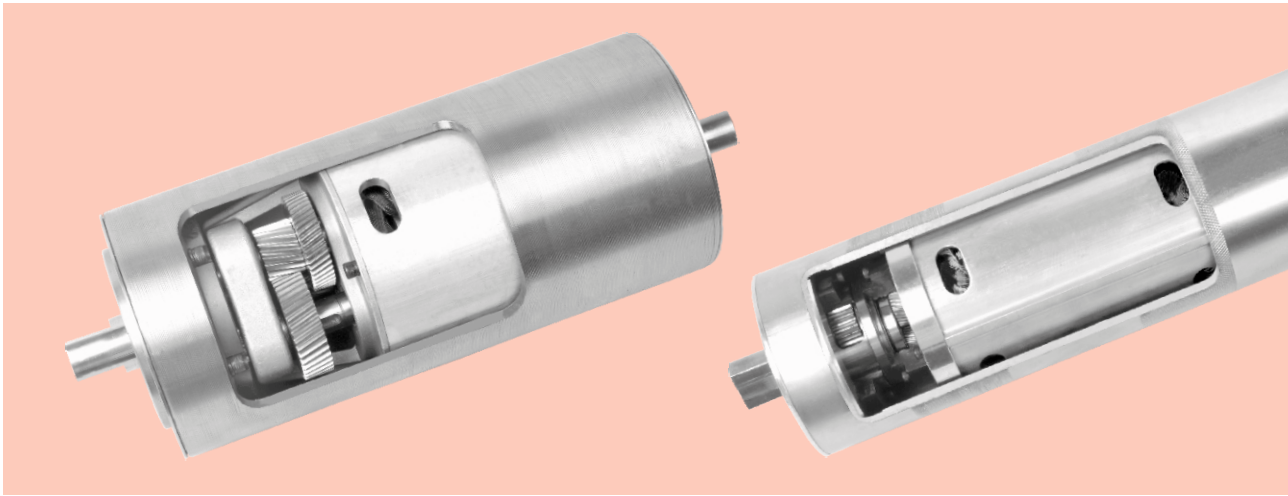


DM/DMX138电动滚筒 DM/DMX138 DRUM MOTOR



产品信息 Product Information

以高效率、大功率且运转平稳而著称的DM/DMX138电动滚筒，此款电动滚筒的功率和速度范围很广，是名副其实的全能型电机。
DM/DMX138 electric drum, which is famous for its high efficiency, high power and stable operation, is a very wide range of power and speed.

- | | |
|-------------------|--|
| • 高负载循环输送机 | High load cycling conveyer |
| • 食品加工工业 | Food processing industry |
| • 制药行业 | Pharmaceutical industry |
| • 肉禽加工业 | Meat processing industry |
| • 皮带输送机 | Belt conveyer |
| • 机场行李处理系统 | Airport baggage handling system |
| • 安检机 | Security machine |
| • 邮政分拣 | Postal sorting |
| • 物流应用 | Logistics application |
| • 干燥、潮湿及需要冲洗的应用环境 | Dry, wet and need to develop the application environment |

DM/DMX138电动滚筒特征 DM/DMX138 Characteristics Of Drum Motor

● 筒体 Drum Shell

- 标准筒体为低碳钢材质，成品表面镀锌，做环保标志 • 食品级筒体为304不锈钢 • 标准筒体表面加工有防滑滚花
- Material of standard drum shell is mild steel, zinc plated, with ECO mark • Food grade shell is 304 stainless steel • Standard cylinder surface processing with non slip roller

● 齿轮传动 Gear Drive

- 高合金钢精磨齿轮，确保传动时超低噪音，铸铝齿轮箱 • 重载型电动滚筒采用行星齿轮传动，根据重型载荷设计，高扭矩传输
- High alloy steel grinding gear, to ensure the transmission of ultra low noise, aluminum gear box • Heavy load electric roller adopts planetary gear transmission, according to heavy load design, high torque transmission

● 电机 Motor

- 频率在50Hz或60Hz时，适用于全球各种通用电压 • 电机绝缘等级F级 • 所有电机附加过热保护器 • 电机油浸式散热 • 电缆出线式，电缆的标准长度1.2米
- When 50Hz or 60Hz is used, it can be applied to all kinds of universal voltage • Motor insulation class F • All motor additional overheat protector • Oil immersed motor cooling
- Cable outlet type, cable length of 1.2M

● 密封等级 Seal Level

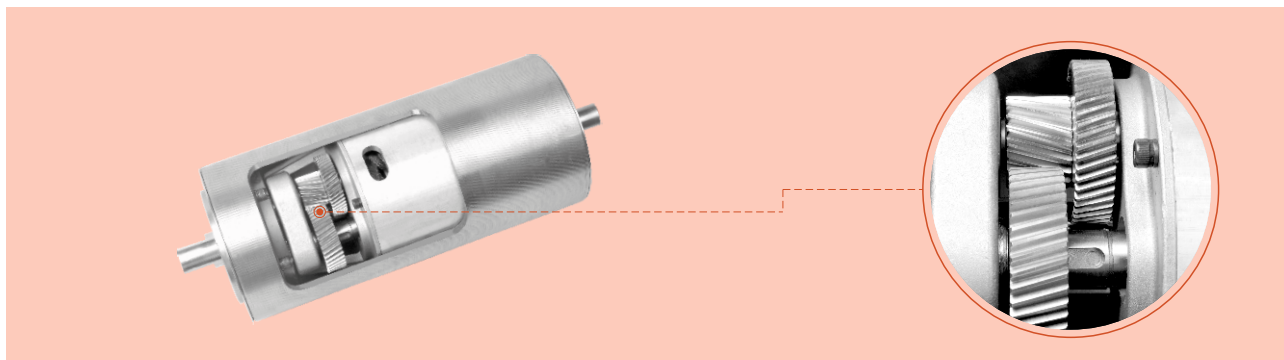
- 轴端采用双密封设计 • 电动滚筒的密封防护等级为IP66/IP67
- Double seal design for shaft end • Drum motor sealing protection level is IP66/IP67

● 注油 Oiling

- 电动滚筒出厂前都已按标准注油 • 每运行5000小时换油一次
- Electric roller factory before has according to the standard oil • Every 5000 hours to run oil change time

● 其他 Other

- 水平安装 • 可以加装电磁制动器，但筒体的最短长度会相应加长 • 带速及筒体长度可按客户要求制作 • 根据客户要求，可制作各种非标准电动滚筒
- Horizontal installation • Can be equipped with electromagnetic brake, but the shortest length of the cylinder will be extended accordingly • Belt speed and tube length can be produced according to customer requirements • According to customer requirements, can produce a variety of non - standard electric roller



DM138三相轻载滚筒电机机械参数 DM138 Mechanical Parameters Of Three Phase Light Load Drum Motor

P_N kW	np	gs	i	v m/min	n_A min^{-1}	M_A Nm	F_N N	SL _{最小值} mm			
0.18	4	2	12.50	46.82	108.0	19.70	286	300			
			14.81	39.52	91.20	23.30	338	300			
			20.63	28.37	65.40	32.50	471	300			
		3	25.60	22.68	52.70	38.10	552	300			
			30.34	19.29	44.50	45.10	654	300			
			35.09	16.68	38.50	52.20	757	300			
			39.39	14.86	34.30	58.60	850	300			
			48.87	11.98	27.60	72.70	1054	300			
			63.40	9.230	21.30	94.30	1368	300			
			70.99	8.240	19.00	105.6	1531	300			
0.37	2	2	12.50	97.11	224.0	14.10	204	300			
			14.81	81.97	189.1	16.70	241	300			
			20.63	58.84	135.7	23.20	336	300			
		3	25.60	47.42	109.4	27.20	394	300			
			30.34	40.01	92.30	32.20	467	300			
			35.09	34.59	79.80	37.30	540	300			
			39.39	30.82	71.10	41.80	606	300			
			48.87	24.84	57.30	51.90	752	300			
			63.40	19.15	44.20	67.30	976	300			
			70.99	17.10	39.40	75.40	1093	300			
0.55	4	2	12.50	46.82	108.0	43.30	628	300			
			14.81	39.52	91.20	51.30	745	300			
			20.63	28.37	65.40	71.50	1037	300			
		3	25.60	22.68	52.70	83.80	1215	300			
			30.34	19.29	44.50	99.30	1440	300			
			35.09	16.68	38.50	114.9	1665	300			
			0.75	2	2	12.50	97.11	224.0	28.50	413	350
						14.81	81.97	189.1	33.80	490	350
						20.63	58.84	135.7	47.00	682	350
					3	25.60	47.42	109.4	55.10	799	350
30.34	40.01	92.30				65.30	947	350			
35.09	34.59	79.80				75.50	1095	350			
39.39	30.82	71.10				84.80	1229	350			
48.87	24.84	57.30	105.2	1525	350						

P_N : 额定功率 Rated power

i: 减速比 Reduction ratio of

M_A : 电动滚筒额定扭矩 Electric drum rated torque

np: 级数 Series

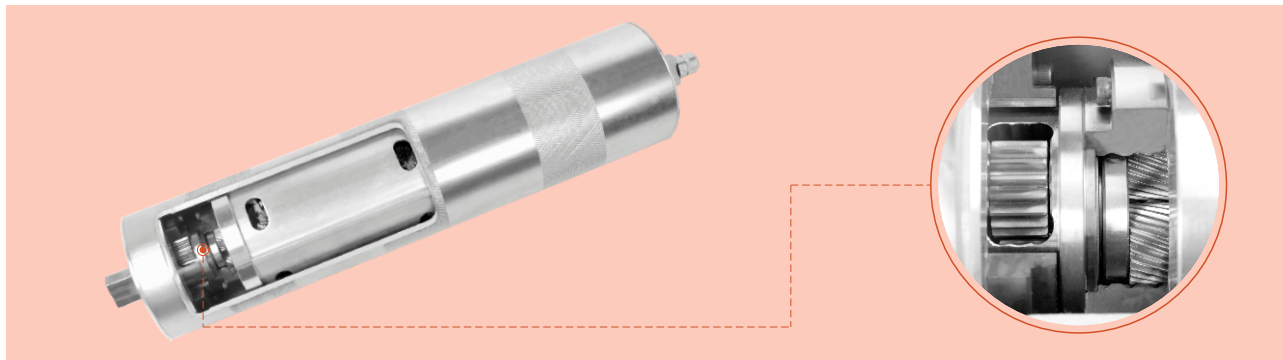
v: 外管额定速率 Outside the rated speed

F_N : 牵引力 Traction force

gs: 齿轮级数 Gear series

n_A : 外管额定转速 Outer tube rated speed

SL_{最小值}: 最短外管长度 The shortest outer tube length



DMX138三相重载滚筒电机机械参数 DMX138 Mechanical Parameters Of Three Phase Heavy Load Drum Motor

P_N kW	np	gs	i	v m/min	n_A min ⁻¹	M_A Nm	F_N N	SL _{最小值} mm
0.37	4	2	9.860	48.63	137.0	19.30	340	300
			12.01	39.91	112.4	23.60	415	300
			15.26	31.41	88.50	30.00	527	300
			17.63	27.18	76.60	34.60	609	300
			20.99	22.84	49.30	41.20	725	300
			24.66	19.44	54.80	48.40	852	300
			27.38	17.50	49.30	53.70	946	300
			30.82	15.55	43.80	60.50	1065	300
			36.07	13.29	37.40	70.80	1246	300
			39.70	12.07	34.00	77.90	1372	300
49.62	9.660	27.20	97.40	1714	300			
0.55	2	2	9.860	100.86	284.1	13.90	244	300
			12.01	82.77	233.2	16.90	297	300
			15.26	65.15	183.5	21.50	378	300
			17.63	56.37	158.8	24.80	437	300
			20.99	47.36	133.4	29.50	520	300
			24.66	40.31	113.6	34.70	611	300
			27.38	36.31	102.3	38.50	678	300
			30.82	32.25	90.90	43.40	763	300
			36.07	27.55	77.60	50.80	893	300
			39.70	25.04	70.50	55.90	983	300
49.62	20.03	56.40	69.80	1229	300			
0.75	4	2	9.860	48.63	137.0	39.20	690	350
			12.01	39.91	112.4	47.80	841	350
			15.26	31.41	88.50	60.70	1068	350
			17.63	27.18	76.60	70.20	1235	350
			20.99	22.84	64.30	83.50	1470	350
			24.66	19.44	54.80	98.10	1727	350
			27.38	17.50	49.30	108.9	1917	350
			30.82	15.55	43.80	122.6	2158	350
			36.07	13.29	37.40	143.5	2526	350
			39.70	12.07	34.00	158.0	2780	350
1.10	2	2	9.860	100.86	284.1	27.70	488	350
			12.01	82.77	233.2	33.80	595	350
			15.26	65.15	183.5	42.90	756	350
			17.63	56.37	158.8	49.60	873	350
			20.99	47.36	133.4	59.10	1039	350
			24.66	40.31	113.6	69.40	1221	350
			27.38	36.31	102.3	77.00	1356	350
			30.82	32.25	90.90	86.70	1526	350
			36.07	27.55	77.60	101.5	1786	350
			39.70	25.04	70.50	111.7	1966	350
49.62	20.03	56.40	139.6	2457	350			

P_N : 额定功率 Rated power

i: 减速比 Reduction ratio of

M_A : 电动滚筒额定扭矩 Electric drum rated torque

np: 级数 Series

v: 外管额定速率 Outside the rated speed

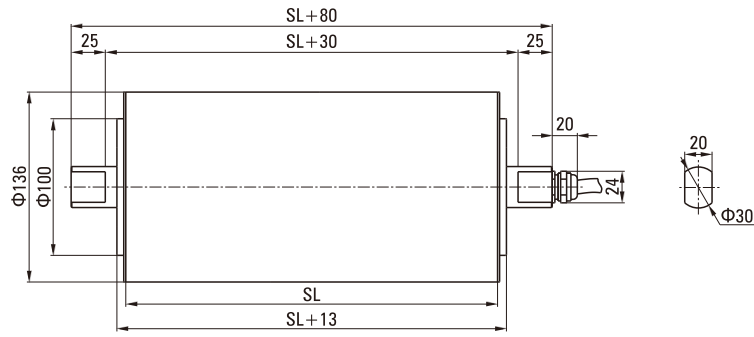
F_N : 牵引力 Traction force

gs: 齿轮级数 Gear series

n_A : 外管额定转速 Outer tube rated speed

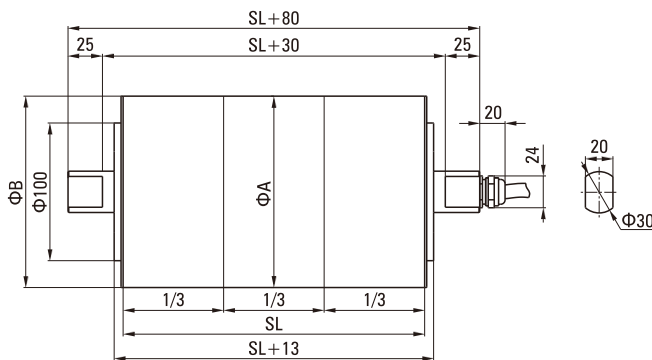
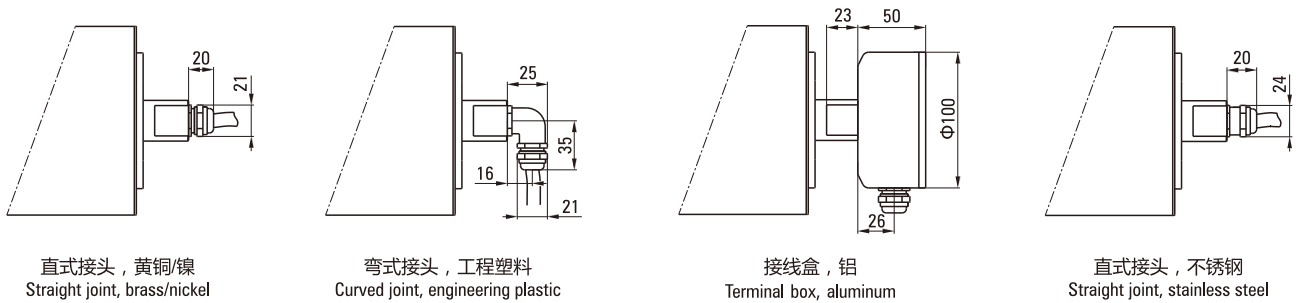
SL_{最小值}: 最短外管长度 The shortest outer tube length

DM/DMX138外形图 DM/DMX138 Outlining Dimensions



标准的滚筒长度和重量 Standard Drum Length And Weight:															
外管长度 SL单位: mm Outer Tube Length SL Unit: mm	300	350	400	450	500	550	600	650	700	750	800	850	900		
平均重量 单位: Kg Average Weight Unit: Kg	14.5	15.7	16.9	18.1	19.3	20.5	21.7	22.9	24.1	25.3	26.5	27.7	28.9		
最大功率 (kW) Maximum Power (kW)	4P												0.75		
	2P												1.10		
最大速比 Slowest Ratio													71.88		
最小速比 Minimum Speed Ratio													9.86		

DM/DMX138安装图 DM/DMX138 Installation Diagram



类型 Type	ΦA mm	ΦB mm
138i冠状外管 138i tube	138	136
138i圆柱形外管 138i cylindrical tube	138	138
138i圆柱形外管+键 138i cylindrical tube + key	138	138

DM/DMX138选项表-电动滚筒 DM/DMX138 Option - Drum Motor

部件说明 Component Description	电动滚筒 Drum Motor
筒体 Barrel	
碳钢冠状筒体 Carbon steel tube body	1
碳钢直式筒体 Carbon steel tubular	2
不锈钢(标准304)冠状筒体 Stainless steel (standard 304) coronal tube body	2
不锈钢(标准304)直式筒体 Stainless steel (standard 304) straight tube	2
特殊冠状及凹槽型 Special coronal and groove type	3
前后端盖 Front end cover	
铸铝端盖 Cast aluminum cover	1
镀镍铸铝端盖 Nickel plated aluminum cover	2
不锈钢(标准304)端盖 Stainless steel (standard 304) end cover	2
前后轴 Antero posterior axis	
碳钢轴 Carbon steel shaft	1
不锈钢轴 Stainless steel shaft	2
电机 Motor	
单相或三相异步电动机 Single phase or three phase asynchronous motor	1
电压1*220V/50Hz或3*380V/50Hz Voltage 1*220V/50Hz or 3*380V/50Hz	1
50Hz或60Hz条件下的全球通用电压 Global common voltage under 50Hz or 60Hz conditions	1
加装电机过热保护器 Motor overheat protector	1
低温环境用油 Low temperature environment	2
食品级油&脂 (FDA和USDA) Food grade oil & fat (FDA and USDA)	2
电气连接 Electrical connection	
不锈钢弯头 Stainless steel elbow	3
直弯式出线 Straight curved line	1
PVC线缆 PVC cable	1
低烟无卤素线缆 Low smoke halogen free cable	2
铸铝端子盒 Cast terminal box	1
镀镍铸铝端子盒 Nickel plated aluminum terminal box	1
不锈钢端子盒 Stainless steel terminal box	1
其他选项 Sidebar	
电磁制止器 Electromagnetic stop device	2
可垂直或倾斜安装 Vertical or inclined installation	3
连接变频器 Connected converter	2

备注Note:

1-标准装配选项
1-Standard option

2-非标准常用选项
2-Non-standard option

3-限制性选项, 选择时应与制造商确认
3-Restrained option, contact manufacturer if needed