



# 伺服驱动器 / 无刷驱动器 工业车辆驱动器 / 交流调速器

SERVO DRIVER / BRUSHLESS DRIVER  
INDUSTRIAL VEHICLE DRIVER / AC SPEED CONTROLLER

中大力德 实现自动化应用的无限可能

# 电机驱动 微特电机 精密减速器



▲ 总公司 宁波中大力德智能传动股份有限公司



▲ 子公司 宁波中大创远精密设备有限公司



▲ 子公司 佛山中大力德驱动科技有限公司

宁波中大力德智能传动股份有限公司始创于1998年，是一家集电机驱动、微特电机、精密减速器、机器人结构本体及一体化智能执行单元的研发、制造、销售、服务于一体的国家高新技术企业。公司注册资本15117万元，分、子公司9家，员工1800余人，2017年8月在深交所主板上市，股票代码：002896。

公司系国家级高新技术企业，主导和参与起草国家标准12项，行业标准5项；授权专利107项，其中发明专利14项。拥有机械工业精密齿轮减速电机工程研究中心、浙江省级高新技术企业研究开发中心、浙江省级企业技术中心。

公司立足于智能化、自动化装备核心零部件设计和制造，为客户提供智能驱动解决方案。公司产品以其差异化和高性价比优势，广泛应用于工作母机、数控设备、工业机器人、智能物流、新能源、食品、包装、纺织、电子、医疗、通讯、农牧等机械装备领域。在替代进口产品的基础上，逐步参与国际竞争。

Ningbo Zhongda Leader Intelligent Transmission Co., Ltd. was founded in 1998. It is an electromechanical automation enterprise integrating R&D, manufacturing, sales and service of motor drives, micro motors, precision reducers and integrated products. It has 9 branches and subsidiaries, over 1,800 employees, and a registered capital of 151.17 million yuan. In August 2017, it was listed on the A-shares of the Shenzhen Stock Exchange (stock code 002896).

The company is a national-level high-tech enterprise, leading and participating in the drafting of 10 national standards and 5 industry standards, maintaining 107 patents and 11 invention patents. It's owning a Zhejiang-level enterprise R&D center.

The company is based on intelligent and automation equipment core component manufacturers and design solution providers. With its differentiated and cost-effective advantages, the company's products are widely used in industrial robots, intelligent logistics, new energy, machine tools and other fields, as well as special machinery and equipment for food, packaging, textiles, electronics, and medical treatment. On the basis of realizing domestic substitution of imported products, gradually participate in international competition.

# S10系列低压伺服驱动器

## S10 SERIES LOW-VOLTAGE SERVO DRIVER

Z      DRV      •      S10      —      400      L      RCB  
 ①      ②      ③      ④      ⑤      ⑥

|   |                                     |   |      |      |                |       |
|---|-------------------------------------|---|------|------|----------------|-------|
| ①   | 公司名称缩写<br>Company name abbreviation | Z: 中大力德 ZHONGDA LEADER                              |      |      |                |       |
| ②   | 产品类型 Product type                   | DRV: 驱动器及相关产品 Drivers and related products          |      |      |                |       |
| ③   | 产品系列 Product series                 | S10: 低压伺服驱动器系列 Low voltage servo driver series      |      |      |                |       |
| ④   | 功率等级 Power level                    | 200   | 400  | 750  | 1500           | 2000  |
|   |                                     | 200W  | 400W | 750W | 1500W          | 2000W |
| ⑤   | 电源类型 Power supply type              | S1: 单相 Single-phase AC110V/50Hz~60Hz                |      |      | L: DC24V~DC48V |       |
|   |                                     | S2: 单相 Single-phase AC220V/50Hz~60Hz                |      |      | L2: DC24V      |       |
|   |                                     | T2: 三相 Three-phase AC220V/50Hz~60Hz                 |      |      | L3: DC36V      |       |
|   |                                     | T3: 三相 Three-phase AC380V/50Hz~60Hz                 |      |      | L4: DC48V      |       |
| ⑥   | 功能码 Function code                   | D: 带数字显示 With digital display                       |      |      |                |       |
|   |                                     | B: 带制动/刹车功能 With braking function                   |      |      |                |       |
|   |                                     | C: 带CanOpen通讯功能 With CanOpen communication function |      |      |                |       |
|   |                                     | R: 带485通讯功能 With 485 communication function         |      |      |                |       |
|   |                                     | P: 带脉冲输入控制 With pulse input control                 |      |      |                |       |
| F: 带脉冲分频输出 With pulse frequency division output |                                     |   |      |      |                |       |

### S10系列低压伺服驱动器特点

#### S10 series low-voltage servo driver features

- 响应速度快：速度环带宽1.2KHZ，优化前馈控制算法，提高动态响应，整定时间最优可达1m。  
Fast response speed: The speed loop width is 1.2KHZ, and the feed forward control algorithm is optimized to improve dynamic response. The optimal setting time can reach 1ms.
- 标准通讯协议：支持ModBus、CANopen通讯协议，兼容多家PLC，多台驱动器级联使用。  
Standard communication protocol: Supports ModBus and CANopen communication protocols, compatible with multiple PLC, and cascaded use of multiple drives.
- 振动抑制强。Strong vibration suppression.
- 控制精度高：支持17/23位绝对值编码器，指令跟随更精确，停止更精准，定位精度可达1um以内。  
Accurate control accuracy: Supports 17/23 bit absolute value encoders, with more precise command following and stopping, and positioning accuracy up to 1um.
- 控制模式多：轮廓位置、速度、转矩，脉冲位置、原点回零，模拟量速度、模拟量转矩。  
Multiple control modes: Contour position, speed, torque, pulse position, zero return to origin, analog speed, and analog torque.



ZDRV.S10-400L-RCB



ZDRV.S10-750L-RCB



ZDRV.S10-1K5L-RCB



ZDRV.S10-2K0L-RCB

## 规格 Specifications

| 型号参数<br>Model parameters           |                                   | ZDRV.S10系列伺服驱动器 Series servo driver  |                   |                   |                   |
|------------------------------------|-----------------------------------|--|-------------------|-------------------|-------------------|
|                                    |                                   | ZDRV.S10-200L-RCB  | ZDRV.S10-400L-RCB | ZDRV.S10-750L-RCB | ZDRV.S10-1K5L-RCB |
| 额定输入电压 Rated input voltage         |                                   | 24Vdc~48Vdc  |                   |                   |                   |
| 输出电流<br>Output current             | 额定电流 (rms) Rated current          | 8Arms  | 15Arms            | 25Arms            | 40Arms            |
|                                    | 峰值电流 (peak) Peak current          | 34Ap   | 63Ap              | 88Ap              | 141Ap             |
| 编码器 Encoder                        |                                   | 增量式 (单端或差分, 5V) Incremental (Single ended or differential, 5V)   |                   |                   |                   |
|                                    |                                   | 绝对值 (RS485, 5V) Absolute value (RS485, 5V)   |                   |                   |                   |
| 能耗制动<br>Energy consumption braking |                                   | 外接制动电阻, 制动电压通过软件设置<br>External braking resistor, braking voltage set through software  |                   |                   |                   |
| 过压报警电压 Overvoltage alarm voltage   |                                   | DC65V±1V   |                   |                   |                   |
| 欠压报警电压 Under voltage alarm voltage |                                   | DC18V±1V   |                   |                   |                   |
| 过载时间 Overload time                 |                                   | 2.5~3倍过载, 最大持续5秒<br>2.5~3 times overload, maximum duration of 5 seconds  |                   |                   |                   |
| 冷却方式 Cooling method                |                                   | 自然冷却 (满功率运行, 需辅助散热)<br>Free cooling (Full power operation, auxiliary heat dissipation required)  |                   |                   |                   |
| 通用功能<br>General functions          | 数字量输入<br>Digital input            | 4路, 支持PNP和NPN接法, 共COM1端<br>高电平12V~30Vdc, 低电平0~5Vdc, 输入阻抗5kΩ<br>4-way, supporting PNP and NPN connections, with a total of COM1 terminals<br>High level 12V~30Vdc, low level 0~5Vdc, input impedance 5kΩ  |                   |                   |                   |
|                                    | 数字量输入功能<br>Digital input function | 根据需求, 可定义为: 使能、故障复位、正负限位、原点信号、原点复位使能、<br>紧急停止、零位固定、脉冲禁止、指令方向取反等<br>According to requirements, it can be defined as: Enable, fault reset, positive and negative limit, origin signal,<br>origin reset enable, emergency stop, zero position fixed, pulse prohibition, command direction reversal, etc   |                   |                   |                   |
|                                    | 模拟量输入 Analog input                | 1路 1-way, -10Vdc~+10Vdc  |                   |                   |                   |
|                                    | 模拟量输入功能<br>Analog input function  | 速度和转矩控制, 可通过上位机设置<br>Speed and torque control, which can be set through the upper computer   |                   |                   |                   |
|                                    | 数字量输出<br>Digital output           | 2路, OC门输出, 最大工作电压30Vdc, 最大电流200mA<br>2-way, OC gate output, maximum working voltage 30Vdc, maximum current 200mA   |                   |                   |                   |
|                                    | 脉冲控制<br>Pulse control             | 脉冲+方向、A相+B相 (默认5V, 24V电平需外串电阻)<br>Pulse+direction, A-phase+B-phase (Default 5V, 24V level requires external resistance)  |                   |                   |                   |
|                                    | 保护功能<br>Protection function       | 欠压保护、过压保护、过载保护、软件过流保护、过温保护、硬件过流保护、<br>失速保护、堵转保护、位置偏差过大、编码器断线保护等<br>Undervoltage protection, overvoltage protection, overload protection, software overcurrent protection,<br>over temperature protection, hardware overcurrent protection, stall protection, blocking protection,<br>excessive position deviation, encoder disconnection protection, etc |                   |                   |                   |
|                                    | 上位机<br>Upper computer             | 可使用485通讯连接电脑上位机软件, 设置参数, 抓取波形, 程序升级<br>Can use 485 communication to connect to computer upper computer software,<br>set parameters, capture waveforms, and upgrade programs  |                   |                   |                   |
| 总线控制<br>Bus control                | Modbus/RS485                      | 最大支持115.2K波特率, 可使用Modbus RTU协议与控制器通讯<br>Supports a maximum baud rate of 115.2K and<br>can communicate with the controller using the Modbus RTU protocol  |                   |                   |                   |
|                                    | CANopen                           | 最大支持1M波特率, 可使用CANopen协议与控制器通讯<br>Supports a maximum baud rate of 1M and can communicate with the controller using the CANopen protocol   |                   |                   |                   |
| 使用环境<br>Usage environment          | 工作温度 Working temperature          | -25~40°C; 40度以上降额使用 Derating usage above 40 degrees Celsius  |                   |                   |                   |
|                                    | 存储温度 Storage temperature          | -10°C~70°C   |                   |                   |                   |
|                                    | 湿度 Humidity                       | 90%RH以下, 不结露 Below 90% RH, without condensation  |                   |                   |                   |
|                                    | 防护等级 Protection level             | IP20   |                   |                   |                   |
|                                    | 安装方式 Installation method          | 垂直或水平安装 Vertical or horizontal installation  |                   |                   |                   |
|                                    | 海拔 Height                         | 1000米以下, 工作海拔在1000米以上时, 每上升100米, 需降额1.5%使用, 最高工作海拔4000米<br>When the working altitude is above 1000 meters and below 1000 meters, a derating of 1.5% is required for every<br>100 meters increase. The maximum working altitude is 4000 meters  |                   |                   |                   |
| 气压 Pressure                        | 86kpa~106kpa                      |  |                   |                   |                   |

# S20系列高压伺服驱动器

## S20 SERIES HIGH-VOLTAGE SERVO DRIVER

Z    DRV    •    S20    —    400    S2    —    BCDR  
 ①    ②       ③       ④    ⑤       ⑥

|   |                                     |   |      |      |       |       |                |       |       |       |
|---|-------------------------------------|---|------|------|-------|-------|----------------|-------|-------|-------|
| ①   | 公司名称缩写<br>Company name abbreviation | Z: 中大力德 ZHONGDA LEADER                              |      |      |       |       |                |       |       |       |
| ②   | 产品类型 Product type                   | DRV: 驱动器及相关产品 Drivers and related products          |      |      |       |       |                |       |       |       |
| ③   | 产品系列 Product series                 | S20: 高压伺服驱动器系列 High voltage servo driver series     |      |      |       |       |                |       |       |       |
| ④   | 功率等级 Power level                    | 200   | 400  | 750  | 1000  | 1500  | 2000           | 3000  | 5000  | 7500  |
|   |                                     | 200W  | 400W | 750W | 1000W | 1500W | 2000W          | 3000W | 5000W | 7500W |
| ⑤   | 电源类型 Power supply type              | S1: 单相 Single-phase AC110V/50Hz~60Hz                |      |      |       |       | L: DC24V~DC48V |       |       |       |
|   |                                     | S2: 单相 Single-phase AC220V/50Hz~60Hz                |      |      |       |       | L2: DC24V      |       |       |       |
|   |                                     | T2: 三相 Three-phase AC220V/50Hz~60Hz                 |      |      |       |       | L3: DC36V      |       |       |       |
|   |                                     | T3: 三相 Three-phase AC380V/50Hz~60Hz                 |      |      |       |       | L4: DC48V      |       |       |       |
| ⑥   | 功能码 Function code                   | D: 带数字显示 With digital display                       |      |      |       |       |                |       |       |       |
|   |                                     | B: 带制动/刹车功能 With braking function                   |      |      |       |       |                |       |       |       |
|   |                                     | C: 带CanOpen通讯功能 With CanOpen communication function |      |      |       |       |                |       |       |       |
|   |                                     | R: 带485通讯功能 With 485 communication function         |      |      |       |       |                |       |       |       |
|   |                                     | P: 带脉冲输入控制 With pulse input control                 |      |      |       |       |                |       |       |       |
| F: 带脉冲分频输出 With pulse frequency division output |                                     |   |      |      |       |       |                |       |       |       |

### S20系列高压伺服驱动器特点

#### S20 series high-voltage servo driver features

- 响应速度快：速度带宽1.2KHZ，优化前馈控制算法，提高动态响应，整定时间最优可达1m。  
Fast response speed: The speed loop width is 1.2KHZ, and the feed forward control algorithm is optimized to improve dynamic response. The optimal setting time can reach 1ms.
- 标准通讯协议：支持ModBus、CANopen通讯协议，兼容多家PLC，多台驱动器级联使用。  
Standard communication protocol: Supports ModBus and CANopen communication protocols, compatible with multiple PLC, and cascaded use of multiple drives.
- 振动抑制强。Strong vibration suppression.
- 控制精度高：支持17/23位绝对值编码器，指令跟随更精确，停止更精准，定位精度可达1um以内。  
Accurate control accuracy: Supports 17/23 bit absolute value encoders, with more precise command following and stopping, and positioning accuracy up to 1um.
- 控制模式多：轮廓位置、速度、转矩，脉冲位置、原点回零，模拟量速度、模拟量转矩。  
Multiple control modes: Contour position, speed, torque, pulse position, zero return to origin, analog speed, and analog torque.



ZDRV.S20-200S2-BCDR



ZDRV.S20-400S2-BCDR



ZDRV.S20-750T2-BCDR



ZDRV.S20-1K0T2-BCDR



ZDRV.S20-1K5T2-BCDR



ZDRV.S20-2K0T2-BCDR

## 规格 Specifications

| 型号参数<br>Model parameters           |                                   | ZDRV.S20系列伺服驱动器 Series servo driver  |                     |                          |                     |
|------------------------------------|-----------------------------------|--|---------------------|--------------------------|---------------------|
|                                    |                                   | ZDRV.S20-400S2-BCDR  | ZDRV.S20-750T2-BCDR | ZDRV.S20-1K0T2-BCDR      | ZDRV.S20-1K5T2-BCDR |
| 额定输入电压 Rated input voltage         |                                   | 200Vac~240Vac  |                     |                          |                     |
| 输出电流<br>Output current             | 额定电流 (rms) Rated current          | 2.8Arms  | 4.5Arms             | 5.6Arms                  | 9.5Arms             |
|                                    | 峰值电流 (peak) Peak current          | 12Ap   | 19.1Ap              | 23.7Ap                   | 40.3Ap              |
| 编码器 Encoder                        |                                   | 绝对值 (RS485, 5V) Absolute value (RS485, 5V)   |                     |                          |                     |
| 能耗制动<br>Energy consumption braking |                                   | 可选择内接或外接制动电阻, 制动电压通过软件设置<br>Internal or external braking resistors can be selected, and the braking voltage can be set through software  |                     |                          |                     |
| 过压报警电压 Overvoltage alarm voltage   |                                   | DC380V±1V  |                     |                          |                     |
| 欠压报警电压 Under voltage alarm voltage |                                   | DC200V±1V  |                     |                          |                     |
| 过载时间 Overload time                 |                                   | 2.5~3倍过载, 最大持续3秒<br>2.5~3 times overload, maximum duration of 3 seconds  |                     |                          |                     |
| 冷却方式 Cooling method                |                                   | 自然冷却 (满功率运行, 需辅助散热)<br>Free cooling (Full power operation, auxiliary heat dissipation required)  |                     | 风冷<br>Forced air cooling |                     |
| 通用功能<br>General functions          | 数字量输入<br>Digital input            | 9路, 公共端COM+端24V电平, 输入电流5mA~20mA<br>9-way, common terminal COM+ terminal 24V level, input current 5mA~20mA  |                     |                          |                     |
|                                    | 数字量输入功能<br>Digital input function | 根据需求, 可定义为: 使能、故障复位、正负限位、原点信号、原点复位使能、紧急停止、零位固定、脉冲禁止、指令方向取反等<br>According to requirements, it can be defined as: Enable, fault reset, positive and negative limit, origin signal, origin reset enable, emergency stop, zero position fixed, pulse prohibition, command direction reversal, etc  |                     |                          |                     |
|                                    | 模拟量输入 Analog input                | 2路 2-way, -10Vdc~+10Vdc  |                     |                          |                     |
|                                    | 模拟量输入功能<br>Analog input function  | 速度和转矩控制, 可通过上位机设置<br>Speed and torque control, which can be set through the upper computer   |                     |                          |                     |
|                                    | 数字量输出<br>Digital output           | 2路, OC门输出, 最大工作电压30Vdc, 最大电流30mA<br>2-way, OC gate output, maximum working voltage 30Vdc, maximum current 30mA   |                     |                          |                     |
|                                    | 脉冲控制<br>Pulse control             | 脉冲+方向、A相+B相 (默认5V, 24V电平)<br>Pulse+ direction, A-phase+B-phase (Default 5V, 24V level)   |                     |                          |                     |
|                                    | 保护功能<br>Protection function       | 欠压保护、过压保护、过载保护、软件过流保护、过温保护、硬件过流保护、失速保护、堵转保护、位置偏差过大、编码器断线保护等<br>Undervoltage protection, overvoltage protection, overload protection, software overcurrent protection, over temperature protection, hardware overcurrent protection, stall protection, blocking protection, excessive position deviation, encoder disconnection protection, etc |                     |                          |                     |
|                                    | 上位机<br>Upper computer             | 可使用485通讯连接电脑上位机软件, 设置参数, 抓取波形, 程序升级<br>Can use 485 communication to connect to computer upper computer software, set parameters, capture waveforms, and upgrade programs   |                     |                          |                     |
|                                    | 操作面板 Operation panel              | 无 No   |                     |                          |                     |
| 总线控制<br>Bus control                | Modbus/RS485                      | 最大支持115.2K波特率, 可使用Modbus RTU协议与控制器通讯<br>Supports a maximum baud rate of 115.2K and can communicate with the controller using the Modbus RTU protocol   |                     |                          |                     |
|                                    | CANopen                           | 最大支持1M波特率, 可使用CANopen协议与控制器通讯<br>Supports a maximum baud rate of 1M and can communicate with the controller using the CANopen protocol   |                     |                          |                     |
| 使用环境<br>Usage environment          | 工作温度 Working temperature          | -25~45°C; 45度以上降额使用 Derating usage above 45 degrees Celsius  |                     |                          |                     |
|                                    | 存储温度 Storage temperature          | -10°C~70°C   |                     |                          |                     |
|                                    | 湿度 Humidity                       | 90%RH以下, 不结露 Below 90% RH, without condensation  |                     |                          |                     |
|                                    | 防护等级 Protection level             | IP20   |                     |                          |                     |
|                                    | 安装方式 Installation method          | 垂直安装 Vertical installation   |                     |                          |                     |
|                                    | 海拔 Height                         | 1000米以下, 工作海拔在1000米以上时, 每上升100米, 需降额1.5%使用, 最高工作海拔4000米<br>When the working altitude is above 1000 meters and below 1000 meters, a derating of 1.5% is required for every 100 meters increase. The maximum working altitude is 4000 meters   |                     |                          |                     |
| 气压 Pressure                        | 86kpa~106kpa                      |  |                     |                          |                     |

# E20系列高压伺服驱动器

## E20 SERIES HIGH-VOLTAGE SERVO DRIVER

Z      DRV      •      E20      —      400      S2      —      BCRPF

①      ②      ③      ④      ⑤      ⑥

|   |                                     |   |      |                |       |
|---|-------------------------------------|---|------|----------------|-------|
| ① | 公司名称缩写<br>Company name abbreviation | Z: 中大力德 ZHONGDA LEADER                              |      |                |       |
| ② | 产品类型 Product type                   | DRV: 驱动器及相关产品 Drivers and related products          |      |                |       |
| ③ | 产品系列 Product series                 | E20: 高压伺服驱动器系列 High voltage servo driver series     |      |                |       |
| ④ | 功率等级 Power level                    | 200   | 400  | 750            | 1500  |
|   |                                     | 200W  | 400W | 750W           | 1500W |
| ⑤ | 电源类型 Power supply type              | S1: 单相 Single-phase AC110V/50Hz~60Hz                |      | L: DC24V~DC48V |       |
|   |                                     | S2: 单相 Single-phase AC220V/50Hz~60Hz                |      | L2: DC24V      |       |
|   |                                     | T2: 三相 Three-phase AC220V/50Hz~60Hz                 |      | L3: DC36V      |       |
|   |                                     | T3: 三相 Three-phase AC380V/50Hz~60Hz                 |      | L4: DC48V      |       |
| ⑥ | 功能码 Function code                   | D: 带数字显示 With digital display                       |      |                |       |
|   |                                     | B: 带制动/刹车功能 With braking function                   |      |                |       |
|   |                                     | C: 带CanOpen通讯功能 With CanOpen communication function |      |                |       |
|   |                                     | R: 带485通讯功能 With 485 communication function         |      |                |       |
|   |                                     | P: 带脉冲输入控制 With pulse input control                 |      |                |       |
|   |                                     | F: 带脉冲分频输出 With pulse frequency division output     |      |                |       |

### E20系列高压伺服驱动器特点

#### E20 series high-voltage servo driver features

- 响应速度快：速度带宽1.2KHZ，优化前馈控制算法，提高动态响应，整定时间最优可达1m。  
Fast response speed: The speed loop width is 1.2KHZ, and the feed forward control algorithm is optimized to improve dynamic response. The optimal setting time can reach 1ms.
- 标准通讯协议：支持ModBus、CANopen通讯协议，兼容多家PLC，多台驱动器级联使用。  
Standard communication protocol: Supports ModBus and CANopen communication protocols, compatible with multiple PLC, and cascaded use of multiple drives.
- 振动抑制强。Strong vibration suppression.
- 控制精度高：支持17/23位绝对值编码器，指令跟随更精确，停止更精准，定位精度可达1um以内。  
Accurate control accuracy: Supports 17/23 bit absolute value encoders, with more precise command following and stopping, and positioning accuracy up to 1um.
- 控制模式多：轮廓位置、速度、转矩，脉冲位置、原点回零，模拟量速度、模拟量转矩。  
Multiple control modes: Contour position, speed, torque, pulse position, zero return to origin, analog speed, and analog torque.



ZDRV.E20-200S2-BCRPF



ZDRV.E20-400S2-BCRPF



ZDRV.E20-750S2-BCRPF

## 规格 Specifications

| 型号参数<br>Model parameters           |                                   | ZDRV.E20系列伺服驱动器 Series servo driver  |                    |
|------------------------------------|-----------------------------------|--|--------------------|
|                                    |                                   | ZDRV.E20-400S2-BCR   | ZDRV.E20-750S2-BCR |
| 额定输入电压 Rated input voltage         |                                   | 200Vac~240Vac  |                    |
| 输出电流<br>Output current             | 额定电流 (rms) Rated current          | 3Arms  | 5Arms              |
|                                    | 峰值电流 (peak) Peak current          | 12.7Ap   | 21.2Ap             |
| 编码器 Encoder                        |                                   | 增量式 (单端或差分, 5V) Incremental (Single ended or differential, 5V)   |                    |
|                                    |                                   | 绝对值 (RS485, 5V) Absolute value (RS485, 5V)   |                    |
| 能耗制动<br>Energy consumption braking |                                   | 外接制动电阻, 制动电压通过软件设置<br>External braking resistor, braking voltage set through software  |                    |
| 过压报警电压 Overvoltage alarm voltage   |                                   | AC400V±1V  |                    |
| 欠压报警电压 Under voltage alarm voltage |                                   | AC200V±1V  |                    |
| 过载时间 Overload time                 |                                   | 2.5~3倍过载, 最大持续5秒<br>2.5~3 times overload, maximum duration of 5 seconds  |                    |
| 冷却方式 Cooling method                |                                   | 自然冷却 (满功率运行, 需辅助散热)<br>Free cooling (Full power operation, auxiliary heat dissipation required)  |                    |
| 通用功能<br>General functions          | 数字量输入<br>Digital input            | 5路, 支持PNP和NPN接法, 共COM1端<br>高电平12V~30Vdc, 低电平0~5Vdc, 输入阻抗5kΩ<br>5-way, supporting PNP and NPN connections, with a total of COM1 terminals<br>High level 12V~30Vdc, low level 0~5Vdc, input impedance 5kΩ  |                    |
|                                    | 数字量输入功能<br>Digital input function | 根据需求, 可定义为: 使能、故障复位、正负限位、原点信号、原点复位使能、<br>紧急停止、零位固定、脉冲禁止、指令方向取反等<br>According to requirements, it can be defined as: Enable, fault reset, positive and negative limit, origin signal,<br>origin reset enable, emergency stop, zero position fixed, pulse prohibition, command direction reversal, etc   |                    |
|                                    | 模拟量输入 Analog input                | 1路 1-way, -10Vdc~+10Vdc  |                    |
|                                    | 模拟量输入功能<br>Analog input function  | 速度和转矩控制, 可通过上位机设置<br>Speed and torque control, which can be set through the upper computer   |                    |
|                                    | 数字量输出<br>Digital output           | 3路, OC门输出, 最大工作电压30Vdc, 最大电流200mA<br>2-way, OC gate output, maximum working voltage 30Vdc, maximum current 200mA   |                    |
|                                    | 脉冲控制<br>Pulse control             | 脉冲+方向、A相+B相 (默认5V, 24V电平需外串电阻)<br>Pulse+direction, A-phase+B-phase (Default 5V, 24V level requires external resistance)  |                    |
|                                    | 保护功能<br>Protection function       | 欠压保护、过压保护、过载保护、软件过流保护、过温保护、硬件过流保护、<br>失速保护、堵转保护、位置偏差过大、编码器断线保护等<br>Undervoltage protection, overvoltage protection, overload protection, software overcurrent protection,<br>over temperature protection, hardware overcurrent protection, stall protection, blocking protection,<br>excessive position deviation, encoder disconnection protection, etc |                    |
|                                    | 上位机<br>Upper computer             | 可使用485通讯连接电脑上位机软件, 设置参数, 抓取波形, 程序升级<br>Can use 485 communication to connect to computer upper computer software,<br>set parameters, capture waveforms, and upgrade programs  |                    |
|                                    | 操作面板<br>Operation panel           | 可配置中大的手持操作面板, 设置参数和读取数据<br>Configurable Zhongda handheld operation panel, setting parameters and reading data  |                    |
| 总线控制<br>Bus control                | Modbus/RS485                      | 最大支持115.2K波特率, 可使用Modbus RTU协议与控制器通讯<br>Supports a maximum baud rate of 115.2K and<br>can communicate with the controller using the Modbus RTU protocol  |                    |
|                                    | CANopen                           | 最大支持1M波特率, 可使用CANopen协议与控制器通讯<br>Supports a maximum baud rate of 1M and can communicate with the controller using the CANopen protocol   |                    |
| 使用环境<br>Usage environment          | 工作温度 Working temperature          | -25~40°C; 40度以上降额使用 Derating usage above 40 degrees Celsius  |                    |
|                                    | 存储温度 Storage temperature          | -10°C~70°C   |                    |
|                                    | 湿度 Humidity                       | 90%RH以下, 不结露 Below 90% RH, without condensation  |                    |
|                                    | 防护等级 Protection level             | IP20   |                    |
|                                    | 安装方式 Installation method          | 垂直或水平安装 Vertical or horizontal installation  |                    |
|                                    | 海拔 Height                         | 1000米以下, 工作海拔在1000米以上时, 每上升100米, 需降额1.5%使用, 最高工作海拔4000米<br>When the working altitude is above 1000 meters and below 1000 meters, a derating of 1.5% is required for every<br>100 meters increase. The maximum working altitude is 4000 meters  |                    |
| 气压 Pressure                        | 86kpa~106kpa                      |  |                    |



# 伺服一体机

## SERVO MOTOR & DRIVER & PLANETARY GEARBOX INTEGRATED

ZDSFQDY XXX AS XXX — XX XX XX X — XXXXX — XXX

①            ②            ③            ④            ⑤            ⑥            ⑦            ⑧            ⑨            ⑩

|   |  |   |                    |                   |
|---|--|---|--------------------|-------------------|
| ① | ZDSFQDY                                | 中大伺服驱动一体机 Zhongda servo drive all-in-one machine  |                    |                   |
| ② | 电机机座号 Motor size                       | 06: 60mm, 08: 80mm, 13: 130mm, 18: 180mm...   |                    |                   |
| ③ | AS系列 Series                            | AS: 小惯量   | AM: 中惯量            | AL: 大惯量           |
|   |  | AS: Small inertia   | AM: Medium inertia | AL: large inertia |
| ④ | 功率等级 Power level                       | 040: 400W, 075: 750W, 085: 850W...  |                    |                   |
| ⑤ | 转速 (*100r/min) Speed                   | 30: 3000r/min, 20: 2000r/min ...  |                    |                   |
| ⑥ | 编码器 Encoder                            | A1: 17位单圈绝对值光编 17 bit single coil absolute value optical  |                    |                   |
|   |  | 11: 1000线增量式光编 1000 line incremental optical  |                    |                   |
|   |  | M1: 1024线增量式磁编 1024 line incremental magnetic   |                    |                   |
|   |  | R1: 绕线式一对极旋变 A pair of polar rotation   |                    |                   |
| ⑦ | 制动器 Brakes                             | 无: 省略、M: 带制动器 (24VDC) None: Omitted, M: With brake (24VDC)  |                    |                   |
| ⑧ | 驱动器电压 Driver voltage                   | C: 单相 Single-phase 220V Single-phase 220V   |                    |                   |
|   |  | S: 三相 Three-phase 220V Three-phase 220V   |                    |                   |
|   |  | S3: 三相 Three-phase 380V Three-phase 380V  |                    |                   |
|   |  | 24: 24VDC   |                    |                   |
| ⑨ | 减速器加速比 Reducer acceleration ratio      | 78ZA9: 行星ZA速比9... (此项没有表示无减速机)<br>Planetary ZA speed ratio of 9... (This item does not indicate that there is no speed reducer) |                    |                   |
| ⑩ | 驱动器的特征码 The feature code of the driver | B: 带制动电阻 With brake resistance  |                    |                   |
|   |  | C: CAN通讯功能 CAN communication function   |                    |                   |
|   |  | R: 485通讯功能 485 communication function   |                    |                   |
|   |  | S: STO功能 STO function   |                    |                   |

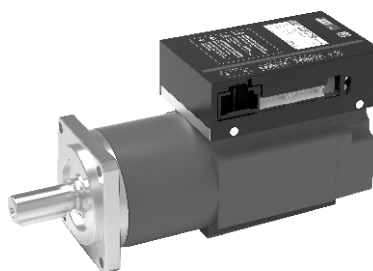
● 注 ⑥ 说明

|             |    |  |
|-------------|----|--|
| 编码器 Encoder | A1 | 17位单圈绝对值光电编码器 17-digit single circumference absolute photoelectric encoder |
|             | I2 | 2500线增量式光电编码器 A 2,500-line incremental photoelectric encoder               |

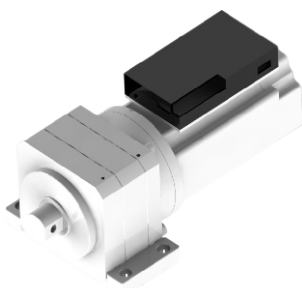
### 伺服一体机的特点

Features of servo motor & driver&planetary gearbox integrated

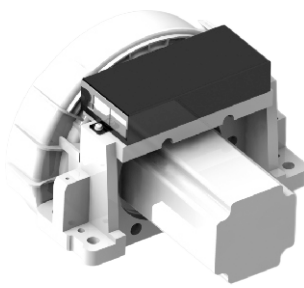
- 体积小。Small volume.
- 传动效率高。High transmission efficiency.
- 接线简单。Simple connection.
- 应用方便。Convenient application



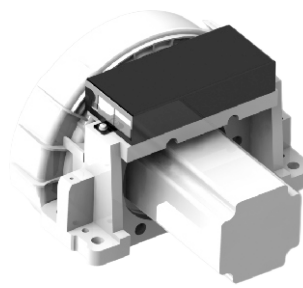
ZDSFQDY06AM040-30M2N48-60ZDF32-CR



ZDSFQDY08AM060-15M2M48-090AGV80-CR



ZDSFQDY08AM075-30M2N48-115AGV21-CR



ZDSFQDY08AM075-30M2M48-115AGV21-BCRS

## 规格 Specifications

| 型号参数<br>Model parameters                            |                             | 伺服一体机—驱动器 Servo motor & driver&planetary gearbox integrated  |                                       |  |
|---|-----------------------------|--|---------------------------------------|--|
|   |                             | ZDSFQDY06AM04-30M2N48<br>-60ZDF32-CR   | DSFQDY08AM060-15M2M48-<br>090AGV80-CR | ZDSFQDY08AM075-30M2N48<br>-115AGV21-CR<br>ZDSFQDY08AM075-30M2M48<br>-115AGV21-BCRS |
| 额定控制电输入电压<br>Rated control electrical input voltage |                             | 48VDC  |                                       |  |
| 额定功率电输入电压<br>Rated power electrical input voltage   |                             | 48VDC  |                                       |  |
| 输出电流<br>Output current                              | 额定电流 (rms) Rated current    | 12Arms   | 18Arms                                | 22Arms   |
|   | 峰值电流 (peak) Peak current    | 50.4Ap   | 75.6Ap                                | 92.4Ap   |
| 编码器 Encoder   |                             | 增量式 (差分, 2500线磁编) Incremental (Differential, 2500 line)  |                                       |  |
| 能耗制动电阻<br>Energy-consumption brake resistance       |                             | 无 No   | 无 No                                  | 5Ω, 60W  |
| 泄放电阻 leak resistance                                |                             | 无 No   | 无 No                                  | 1Ω, 50W  |
| 能耗制动电压 Energy-consumption brake voltage             |                             | DC60V±1V   |                                       |  |
| 过压报警电压 Overvoltage alarm voltage                    |                             | DC65V±1V   |                                       |  |
| 欠压报警电压 Under voltage alarm voltage                  |                             | DC40V±1V   |                                       |  |
| 过载时间 Overload time                                  |                             | 2.5~3倍过载, 最大持续3秒<br>2.5~3 times overload, maximum duration of 3 seconds  |                                       |  |
| 冷却方式 Cooling method                                 |                             | 自然冷却 Free cooling  |                                       |  |
| 通用功能<br>General functions                           | 数字量输入<br>Digital input      | 2路, 支持PNP和NPN接法, 共COM1端, 高电平12V~24VDC<br>2 way, support PNP and NPN connection, total COM1 terminal, High level 12V~24VDC  |                                       |  |
|   | 数字量输出<br>Digital output     | 1路, OC门输出, 最大工作电压30VDC, 最大电流150mA<br>1-way, OC gate output, maximum working voltage 30VDC, maximum current 150mA   |                                       |  |
|   | 保护功能<br>Protection function | 欠压保护、过压保护、过载保护、软件过流保护、过温保护、硬件过流保护、失速保护、堵转保护、位置偏差过大、编码器断线保护等<br>Undervoltage protection, overvoltage protection, overload protection, software overcurrent protection, over temperature protection, hardware overcurrent protection, stall protection, blocking protection, excessive position deviation, encoder disconnection protection, etc |                                       |  |
|   | 上位机<br>Upper computer       | 可使用485通讯连接电脑上位机软件, 设置参数, 抓取波形, 程序升级<br>Can use 485 communication to connect to computer upper computer software, set parameters, capture waveforms, and upgrade programs   |                                       |  |
|   | CANopen                     | 最大支持1M波特率 Maximum support of 1M wave rate  |                                       |  |
| 使用环境<br>Usage environment                           | 工作温度 Working temperature    | -25~40°C; 40度以上降额使用 Derating usage above 40 degrees Celsius  |                                       |  |
|   | 存储温度 Storage temperature    | -10°C~70°C   |                                       |  |
|   | 湿度 Humidity                 | 90%RH以下, 不结露 Below 90% RH, without condensation  |                                       |  |
|   | 防护等级 Protection class       | IP20   |                                       |  |
|   | 海拔 Height                   | 1000米以下, 工作海拔在1000米以上时, 每上升100米, 需降额1.5%使用, 最高工作海拔4000米<br>When the working altitude is above 1000 meters and below 1000 meters, a derating of 1.5% is required for every 100 meters increase. The maximum working altitude is 4000 meters   |                                       |  |
| 气压 Pressure   | 86kpa~106kpa                |  |                                       |  |

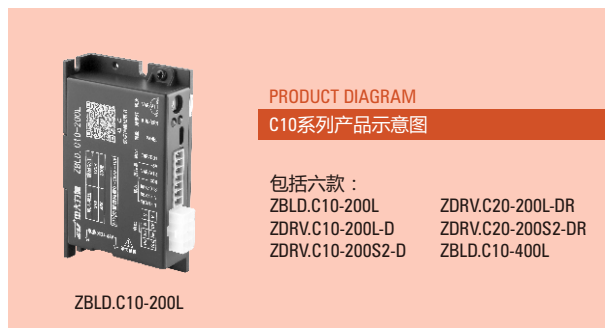
## 规格 Specifications

| 型号参数<br>Model parameters                       | 伺服一体机—电机 Servo motor & driver & planetary gearbox integrated |  |  |
|--|--|--|--|
|  | ZDSFQDY06AM040-30M2N48<br>-60ZDF32-CR                        | ZDSFQDY08AM060-15M2M48<br>-090AGV80-CR | ZDSFQDY08AM075-30M2N48<br>-115AGV21-CR<br>ZDSFQDY08AM075-30M2M48<br>-115AGV21-BCRS |
| 输出功率<br>Output power                           | 400W   | 600W                                   | 750W   |
| 极数<br>Number of poles                          | 10   | 8                                      | 8  |
| 额定电压<br>Rated voltage                          | 48VDC  | 48VDC                                  | 48VDC  |
| 额定转速<br>Rated speed                            | 3000RPM  | 1500RPM                                | 3000RPM  |
| 最高转速<br>Maximum speed                          | 4000RPM  | 2000RPM                                | 4500RPM  |
| 额定扭矩<br>Rated torque                           | 1.27N.m  | 3.82N.m                                | 2.38N.m  |
| 力矩系数<br>Torque coefficient                     | /  | 0.21N.m/Arms                           | 0.125N.m/Arms  |
| 转子转动惯量<br>Rotor inertia                        | /  | 0.19*10 <sup>-3</sup> kgm <sup>2</sup> | 0.18*10 <sup>-3</sup> kgm <sup>2</sup>   |
| 线电阻<br>Line resistance                         | 0.056Ω   | 0.34Ω                                  | 0.084Ω   |
| 线电感<br>Linear inductance                       | 0.14mH   | 0.99mH                                 | 0.31mH   |
| 反电势系数<br>Back electromotive force coefficient  | 11V/Krpm   | 14.5V/KRPM                             | 7.3V/KRPM  |
| 额定电流<br>Rated current                          | 12A  | 18A                                    | 22A  |
| 工作制<br>Working duty                            | 1min   | S2 (5min)                              | S2 (60min)   |
| 绝缘等级<br>Insulation class                       | F级 Level   | F级 Level                               | F级 Level   |
| 防护等级<br>Protection class                       | IP20   | IP20                                   | IP20   |
| 环境温度<br>Ambient temperature                    | 0-+40°C  | 0-+40°C                                | 0-+40°C  |
| 编码器<br>Encoder                                 | 2500线磁编<br>Linear magnetic braiding                          | 2500线磁编<br>Linear magnetic braiding    | 2500线磁编<br>Linear magnetic braiding  |
| 减速比<br>Reduction ratio                         | 32:1   | 80:1                                   | 21:1   |
| 减速级数<br>Gearbox stage                          | /  | 2                                      | 2  |
| 额定输出扭矩<br>Rated output torque                  | /  | 180N.m                                 | 45N.m  |
| 容许径向负荷<br>Permissible radial load              | /  | 10249N                                 | 8000N  |
| 容许轴向负荷<br>Allowable axial load                 | /  | 3300N                                  | 2000N  |
| 回程间隙 (arcmin)<br>Backlash                      | ≤10  | ≤25                                    | ≤25  |
| 减速器额定扭矩<br>Rated torque of reducer             | 38N.m  | 38N.m                                  | /  |
| 瞬间承受最大扭矩<br>Instantly withstand maximum torque | 两倍于额定扭矩<br>Twice the rated torque                            | /                                      | /  |
| 传动效率<br>Transmission efficiency                | 94%  | /                                      | /  |
| 噪音<br>Noise                                    | ≤65dB(A) 100cm   | ≤65dB(A) 100cm                         | ≤65dB(A) 100cm   |

# C10系列无刷驱动器 C10 SERIES BRUSHLESS DRIVERS

Z BLD • C10 — 120 L/H/S2 D/X  
① ② ③ ④ ⑤ ⑥

|   |              |   |                            |
|---|--------------|---|----------------------------|
| ① | 公司名称 Company | Z: 中大德 ZHONGDA LEADER                     |                            |
| ② | 类型 Type      | BLD: 无刷电机驱动器 Motor driver                 |                            |
|   |              | DRV: 驱动器及相关产品 Driver and related products |                            |
| ③ | 版本 Version   | C10: C10、C13系列 Series                     |                            |
| ④ | 功率 Power     | 120                                       | 200                        |
|   |              | 120W                                      | 200W                       |
| ⑤ | 电压 Voltage   | L: 低压DC24V~48V<br>Low voltage             | L2: 低压DC24V<br>Low voltage |
|   |              | H/S2: 高压 High voltage AC220V/50Hz         |                            |
| ⑥ | 功能 Feature   | D: 带数字显示 With display                     |                            |
|   |              | X: 扩展功能 With extended function            |                            |



ZDRV.C10-200S2-D



ZDRV.C20-200L-DR



ZDRV.C20-200S2-DR



● ZDRV.C13-90L2



● ZDRV.C13-120S2

## C10系列无刷驱动器特点

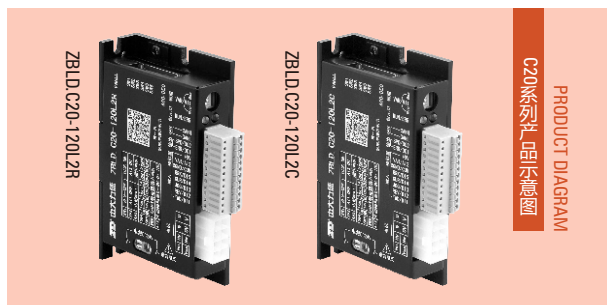
### Features of C10 series brushless motor driver

- 数字显示：采用4位数码管显示：运行状态、设定速度、运行速度、故障指示。  
Digital display: 4-digit digital tube display: running status, set speed, running speed, fault indication.
- 稳速运行：采用速度闭环控制（控制精度±0.5%）。  
Stable speed operation: adopt speed closed-loop control (control accuracy ±0.5%).
  - 输入输出：2组NPN型数字输入接口（正转和反转）；1组开漏型数字输出接口（故障输出）。  
Input and output: 2 groups of NPN type digital input interfaces (forward and reverse); 1 group of open-drain digital output interfaces (fault output).
- 速度给定：通过面板旋钮设定运行速度，方便快捷。  
Speed setting: Set the running speed through the panel knob, which is convenient and quick.
- 完善的故障检测及保护功能：1、欠压、过压、过流、过载、堵转、短路、缺相、过温等多种故障检测；2、故障发生后，驱动器根据故障类型进行相应的保护动作；3、故障信息可通过数码管进行显示。  
Perfect fault detection and protection functions: 1. Various fault detections such as undervoltage, overvoltage, overcurrent, overload, locked rotor, short circuit, phase loss, overtemperature, etc.; 2. After the failure occurs, the drive carries out corresponding protection actions according to the type of failure; 3. The fault information can be displayed through the digital tube.
- 扩展功能包括：扩展3组NPN型数字量输入接口、1组模拟量接口、1组485通讯控制接口。  
Extended functions include: expansion of 3 sets of NPN digital input interfaces, 1 set of analog quantity interfaces, and 1 set of 485 communication control interfaces.

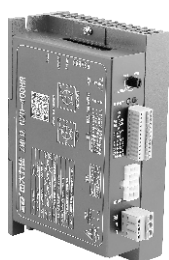
# C20系列无刷驱动器 C20 SERIES BRUSHLESS DRIVERS

Z BLD • C20 — 120 L/H/S2 C/R  
① ② ③ ④ ⑤ ⑥

|                |   |      |      |
|----------------|---|------|------|
| ① 公司名称 Company | Z: 中大力德 ZHONGDA LEADER                        |      |      |
| ② 类型 Type      | BLD: 无刷电机驱动器 Brushless driver                 |      |      |
|                | DRV: 驱动器及相关产品 Driver and related products     |      |      |
| ③ 版本 Version   | C20: C20系列 Series                             |      |      |
| ④ 功率 Power     | 120   | 400  | 800  |
|                | 120W  | 400W | 800W |
| ⑤ 电压 Voltage   | L: DC24V~48V (L1:12V; L2:24V; L3:36V; L4:48V) |      |      |
|                | H/S2: 高压 High voltage AC220V                  |      |      |
| ⑥ 功能 Feature   | C: CAN通信 Can communication                    |      |      |
|                | R: 带485通讯 485 communication                   |      |      |



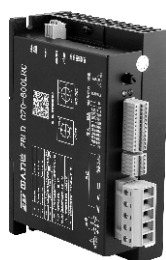
ZDRV.C20-120S2-R  
ZDRV.C20-200S2-R  
ZDRV.C20-750S2-R



ZBLD.C20-400HR



ZBLD.C20-400LR



ZBLD.C20-800LRC



键盘ZBLD.C20-KB5T-U



ZDRV.C21-200L-R

## ■ C20系列无刷驱动器特点 Features of C20 series brushless motor driver

- 多种运行方式：开环、闭环（控制精度±0.5%）。  
A variety of operating modes: open-loop, closed-loop (control accuracy ±0.5%).
- 多种命令给定：多功能输入端子控制、通讯控制、外置键盘控制。  
Multiple commands given: multi-function input terminal control, communication control, external keyboard control.
- 多种速度给定：内置旋钮、外部模拟电压（0~5/10V）或PWM（3k~10kHz）、HDI高速脉冲输入0~20KHZ频率给定、通讯给定、键盘给定、多段速度、简易PLC控制（视具体型号而定）。  
Various speed settings: built-in knob, external analog voltage (0~5/10V) or PWM (3k~10kHz), HDI high-speed pulse input 0~20KHZ frequency setting, communication setting, keyboard setting, multi-speed, Simple PLC control (depending on the specific model).
- 加/减速度控制：0.3s~10s范围，可通过旋钮调节、通讯调节和键盘调节。  
Acceleration/deceleration control: 0.3s~10s range, can be adjusted by knob, communication adjustment and keyboard adjustment.
- 电子刹车功能：实现快速电磁制动。  
Electronic brake function: realize fast electromagnetic braking.
- 多功能输入接口：5个数字量输入，用户可通过键盘自定义为：正转、反转、点动、自由停止、电子刹车、多段速度等多种功能输入。  
Multi-function input interface: 5 digital inputs, which can be customized by the user through the keyboard: forward, reverse, jog, free stop, electronic brake, multi-speed and other functional inputs.
- 多功能输出接口：2个数字量输出用户可通过键盘自定义为：运行中、故障、速度输出、过载预警、虚拟端子输出等多种功能输出。  
Multi-function output interface: 2 digital outputs can be customized by the user through the keyboard: running, fault, speed output, overload warning, virtual terminal output and other functional outputs.
- 完善的故障检测及保护功能：欠压、过压、过流、过载、堵转、短路、缺相、过温等多种故障检测；故障发生后，驱动器根据故障类型进行相应的保护动作；故障信息可通过LED灯或键盘进行显示。  
Perfect fault detection and protection functions: under-voltage, over-voltage, over-current, overload, locked-rotor, short-circuit, phase-loss, over-temperature and other fault detection; after a fault occurs, the driver performs corresponding protection actions according to the type of fault; Fault information can be displayed by LED lights or keyboard.

**键盘配件：**外引键盘可用于设置驱动器参数、读取驱动器状态，实现键盘控制、多功能输入、多功能输出、多段速度、简易PLC等功能。

Keyboard accessories: The external keyboard can be used to set parameters, read status, realize keyboard control, multi-function input, multi-function output, multi-speed, simple PLC and other functions. function input, multi-function output, multi-speed, simple PLC and other functions.

## C30系列无刷驱动器

### C30 SERIES BRUSHLESS DRIVERS

Z      DRV      •      C30      —      200      L/S2      B/C/R

①      ②      ③      ④      ⑤      ⑥

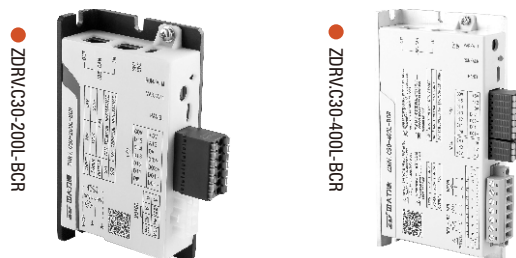
|   |              |   |      |
|---|--------------|---|------|
| ① | 公司名称 Company | Z: 中大力德 ZHONGDA LEADER                        |      |
| ② | 类型 Type      | DRV: 驱动器及相关产品 Driver and related products     |      |
| ③ | 版本 Version   | C30: C30系列 Series                             |      |
| ④ | 功率 Power     | 200   | 400  |
|   |              | 200W  | 400W |
| ⑤ | 电压 Voltage   | L: DC24V~48V (L1:12V; L2:24V; L3:36V; L4:48V) |      |
|   |              | S2: 高压 High voltage AC220V                    |      |
| ⑥ | 功能 Feature   | B: 带制动/刹车 With brake                          |      |
|   |              | R: 带485通讯 With 485 communication              |      |
|   |              | C: CAN通信 With Can communication               |      |
|   |              | D: 带数字显示 With display                         |      |



### C30系列无刷驱动器特点

#### Features of C30 series brushless motor driver

- 多种运行方式：开环、闭环（控制精度±0.5%）。  
Multiple operation modes: open-loop, closed-loop (control accuracy ±0.5%).
- 多种控制方式：四象限运行、零速保持、力矩/速度模式、零速定位。  
Multiple control modes: four-quadrant operation, zero-speed hold, torque/speed mode, zero-speed positioning.
- 多种命令给定：多功能输入端子控制（支持NPN、PNP输入）；通讯控制；外置键盘控制。  
A variety of command given: multi-function input terminal control (support NPN, PNP input); communication control; external keyboard control.
- 多种速度给定：内置旋钮、外部模拟电压（0~5/10V）或PWM（3k~10kHz）、HDI高速脉冲输入0~20KHZ频率给定、通讯给定、键盘给定、多段速度、简易PLC控制（视具体型号而定）。  
Various speed settings: built-in knob, external analog voltage (0~5/10V) or PWM (3k~10kHz), HDI high-speed pulse input 0~20KHZ frequency setting, communication setting, keyboard setting, multi-speed, Simple PLC control (depending on the specific model).
- 加/减速度控制：0.3s~10s可通过通讯调节和键盘调节。  
Acceleration/deceleration control: 0.3s~10s can be adjusted by communication and keyboard.
- 电子刹车功能：实现快速电磁制动，可外接能耗电阻制动。  
Electronic brake function: realize fast electromagnetic braking, and external energy consumption resistance braking can be realized.
- 多功能输入接口：5个数字量输入（支持NPN和PNP）用户可通过键盘自定义为：正转、反转、点动、自由停止、电子刹车、多段速度等多种功能输入。



Multi-function input interface: 5 digital inputs (supports NPN and PNP), which can be customized by the user through the keyboard: forward, reverse, jog, free stop, electronic brake, multi-speed and other functional inputs.

- 多功能输出接口：2个数字量输出用户可通过键盘自定义为：运行中、故障、速度输出、过载预警、虚拟端子输出等多种功能输出。

Multi-function output interface: 2 digital outputs can be customized by the user through the keyboard: running, fault, speed output, overload warning, virtual terminal output and other functional outputs.

- 完善的故障检测及保护功能：欠压、过压、过流、过载、堵转、短路、缺相等多种故障检测；故障发生后，驱动器根据故障类型进行相应的保护动作；故障信息可通过LED灯或键盘进行显示。

Perfect fault detection and protection functions: under-voltage, over-voltage, over-current, overload, locked rotor, short-circuit, lack of etc. fault detection; after a fault occurs, the driver will perform corresponding protection actions according to the type of fault; fault information can be passed through LED lights or keyboard display.

## C40系列无感变频驱动器

### C40 SERIES NON-INDUCTIVE VARIABLE FREQUENCY DRIVE

Z      DRV      •      C40      —      400      L      —      R  
 ①      ②      ③      ④      ⑤      ⑥

|   |                                     |  |
|---|-------------------------------------|--|
| ① | 公司名称缩写<br>Company name abbreviation | Z: 中大德 ZHONGDA LEADER  |
| ② | 产品类型 Product type                   | DRV: 驱动器及相关产品 Drivers and related products   |
| ③ | 产品系列 Product series                 | C40: 无感驱动器系列 Non-inductive driver series   |
| ④ | 功率等级 Power level                    | 低压 Low pressure: 120:120W 200:200W 400:400W 800:800W<br>高压 High pressure: 120:120W 200:200W 400:400W 750:750W 1100:1100W 1500:1500W 2200:2200W |
| ⑤ | 电源类型 Power supply type              | S2: 单相 Single-phase AC220V/50Hz~60Hz      L: DC24V~DC48V   |
| ⑥ | 功能码 Function code                   | D: 带数字显示 With digital display<br>B: 带制动/刹车功能 With braking function<br>R: 带485通讯功能 With 485 communication function                              |



ZDRV.C40-400L-R

ZDRV.C40-400S2-BR  
ZDRV.C40-200S2-BR

ZDRV.C40-750S2-BR

### C40系列无感变频驱动器特点

#### Features of C40 series non-inductive variable frequency drive

- 只需三根电机动力线：从根本上避免电机编码器线或霍尔信号线的连接不可靠、信号被干扰等问题，可有效提升系统的可靠性。  
Only three motor power lines are needed: fundamentally avoiding problems such as unreliable connection of motor encoder lines or Hall signal lines and signal interference, which can effectively improve the reliability of the system.
- 无需电机编码器或霍尔传感器：采用高性能无位置传感器方案，实现电机的正弦波FOC矢量控制，节省了编码器或霍尔的线束和端子，有效降低系统的整体成本。  
No need for motor encoder or Hall sensor: Adopting a high-performance position sensorless solution, achieving sine wave FOC vector control of the motor, saving the wiring harness and terminals of the encoder or Hall, effectively reducing the overall cost of the system.
- 低速性能好：优秀的速度闭环控制性能，最低转速可达20rpm，调速比可以与带编码器电机驱动器相媲美。  
Good low-speed performance: Excellent speed closed-loop control performance, with a minimum speed of up to 20rpm, and a speed ratio comparable to motor drives with encoders.
- 支持大负载带载启动：最大允许150%电机额定负载转矩条件下带载启动；如需更大负载转矩条件下带载启动，可与我司沟通产品定制事宜。  
Support heavy load on-load starting: maximum allowable on-load starting at 150% of the rated load torque of the motor; If you need to start with load under higher load torque conditions, you can communicate with our company about product customization matters.
- 支持超长距离电机控制：本产品与电机间三相动力线的最长允许距离为100米如需支持更长距离，可与我司沟通产品定制事宜。  
Support for ultra long distance motor control: The maximum allowable distance for the three-phase power line between this product and the motor is 100 meters. If you need to support a longer distance, you can communicate with our company about product customization matters.
- 速度波动小：额定转速条件下速度波动大约为1%优异的稳速性能可以媲美带编码器电机，满足绝大部分应用的需求。  
Low speed fluctuation: Under rated speed conditions, the speed fluctuation is about 1%, and the excellent speed stability performance can be comparable to motors with encoders, meeting the needs of the vast majority of applications.
- 支持超高速电机：支持电机最高转速可达30000rpm，如需支持更高电机转速，可与我司沟通定制。  
Can support ultra high speed motors: supports a maximum motor speed of up to 30000 rpm. If you need to support higher motor speeds, you can communicate with our company for customization.
- 适用性强：拥有强大的电机参数自动识别功能。本产品与各个厂商各类无霍尔直流无刷电机、无编码器永磁同步电机均可适配。  
Strong applicability: With powerful automatic recognition function for motor parameters, this product can be compatible with various manufacturers of Hall free DC brushless motors and encoder free permanent magnet synchronous motors.
- 具有制动电路，可以快速启停。  
Equipped with a braking circuit that can quickly start and stop.

## 规格 Specifications

| 型号参数<br>Model parameters           |                                   | C40无感变频驱动器 non-inductive variable frequency drive  |  |   |  |   |
|------------------------------------|-----------------------------------|--|--|---|--|---|
|                                    |                                   | C40-200L-R   | C40-400L-R   | C40-200S2-BR  | C40-400S2-BR   | C40-750S2-BR  |
| 额定输入电压 Rated input voltage         |                                   | 24V/48V  |  |   | AC220V (±20%)  |   |
| 输出电流<br>Output current             | 额定电流 (rms) Rated current          | 7.5Arms  | 15Arms (注1)  | 1.4Arms   | 2.8Arms  | 4.3Arms   |
|                                    | 峰值电流 (peak) Peak current          | 21Ap   | 42Ap   | 4Ap   | 8Ap  | 12.2Ap  |
| 编码器 Encoder                        |                                   | 无 No   |  |   |  |   |
| 能耗制动<br>Energy consumption braking |                                   | 外接制动电阻, 制动电压通过软件设置<br>External braking resistor, braking voltage set through software  |  |   |  |   |
| 过压报警电压 Overvoltage alarm voltage   |                                   | DC65V以上 Above  |  |   | DC390V以上 Above   |   |
| 欠压报警电压 Under voltage alarm voltage |                                   | DC18V以下 Below  |  |   | DC200V以下 Below   |   |
| 过载时间 Overload time                 |                                   | 2倍过载, 最大持续20s<br>2 times overload, maximum duration of 20 seconds  | 2倍过载, 最大持续10s<br>2 times overload, maximum duration of 10 seconds  | 1.5~2倍过载, 持续时间3~15s<br>1.5 to 2 times overload, lasting for 3 to 15 seconds | 2倍过载, 最大持续10s<br>2 times overload, maximum duration of 10 seconds  | 2倍过载, 最大持续15s<br>2 times overload, maximum duration of 15 seconds |
| 冷却方式 Cooling method                |                                   | 自然冷却<br>Free cooling   | 辅助散热、自然冷却<br>Auxiliary heat dissipation, Free cooling  |   | 自然冷却<br>Free cooling   | 风冷<br>Forced air cooling  |
| 通用功能<br>General functions          | 数字量输入<br>Digital input            | 2路DI<br>2-way DI   | 4路DI<br>4-way DI   | 5路DI<br>5-way DI  | 2路DI<br>2-way DI   | 4路DI<br>4-way DI  |
|                                    | 数字量输入功能<br>Digital input function | 120W: 两路DI一路DO, DI1使能, DI2反转, DO故障输出;<br>120W: Two DI and one DO, DI1 enabled, DI2 reversed, DO fault output;<br>400W: 正反转、正反转点动、多段速、自有停车、故障复位、电子刹车、外部故障输入、正反限位;<br>400W: forward and reverse rotation, forward and reverse jog, multi speed, self parking, fault reset, electronic brake, external fault input, forward and reverse rotation limit; |  |   |  |   |
|                                    | 模拟量输入 Analog input                | /  | 外部模拟电压 (0~10V)<br>External analog voltage  | /   | 外部模拟电压 (0~10V)<br>External analog voltage  |   |
|                                    | 模拟量输入功能<br>Analog input function  | /  | 模拟量速度控制<br>Analog speed control  | /   | 模拟量速度控制<br>Analog speed control  |   |
|                                    | 数字量输出<br>Digital output           | 1路DO<br>1-way DO   | 2路DO<br>2-way DO   | 1路DO<br>1-way DO  | 2路DO<br>2-way DO   |   |
|                                    | 保护功能<br>Protection function       | 过流、过载、短路、过温、欠压、过压等<br>Overcurrent, overload, short circuit, overtemperature, undervoltage, overvoltage, etc  |  |   |  |   |
|                                    | 上位机<br>Upper computer             | 可使用485通讯连接电脑上位机软件, 设置参数, 抓取波形, 程序升级<br>Can use 485 communication to connect to computer upper computer software, set parameters, capture waveforms, and upgrade programs   |  |   |  |   |
|                                    | 蓝牙 Bluetooth                      | 无 No   |  |   |  |   |
| 总线控制<br>Bus control                | Modbus/RS485                      | 无 No   | 最大支持115.2K波特率, 可使用Modbus RTU协议与控制器通讯<br>Supports a maximum baud rate of 115.2K and can communicate with the controller using the Modbus RTU protocol | 无 No  | 最大支持115.2K波特率, 可使用Modbus RTU协议与控制器通讯<br>Supports a maximum baud rate of 115.2K and can communicate with the controller using the Modbus RTU protocol |   |
|                                    | CANopen                           | 无 No   |  |   |  |   |
| 使用环境<br>Usage environment          | 工作温度 Working temperature          | -25~40°C; 40度以上降额使用 Derating usage above 40 degrees Celsius  |  |   |  |   |
|                                    | 存储温度 Storage temperature          | -10°C~70°C   |  |   |  |   |
|                                    | 湿度 Humidity                       | 90%RH以下, 不结露 Below 90% RH, without condensation  |  |   |  |   |
|                                    | 防护等级 Protection level             | IP20   |  |   |  |   |
|                                    | 安装方式 Installation method          | 垂直或水平安装 Vertical or horizontal installation  |  |   |  |   |
|                                    | 海拔 Height                         | 1000米以下, 工作海拔在1000米以上时, 每上升100米, 需降额1.5%使用, 最高工作海拔4000米<br>When the working altitude is above 1000 meters and below 1000 meters, a derating of 1.5% is required for every 100 meters increase. The maximum working altitude is 4000 meters   |  |   |  |   |
| 气压 Pressure                        | 86kpa~106kpa                      |  |  |   |  |   |

● 注1: 未加辅助散热可到12Arms

Note 1: Without auxiliary heat dissipation, it can reach 12Arms



## C41系列无感驱动器

### C41 SERIES NON-INDUCTIVE DRIVER

Z · C41 — 200 L — R — A  
 ① ② ③ ④ ⑤ ⑥ ⑦

|   |                                     |  |                |
|---|-------------------------------------|--|----------------|
| ① | 公司名称缩写<br>Company name abbreviation | Z: 中大德 ZHONGDA LEADER                        |                |
| ② | 产品类型 Product type                   | DRV: 驱动器及相关产品 Drivers and related products   |                |
| ③ | 产品系列 Product series                 | C41: 无感驱动器系列 Non-inductive driver series     |                |
| ④ | 功率等级 Power level                    | 低压 Low pressure: 120:120W 200:200W 400:400W  |                |
|   |                                     | 高压 High pressure: 120:120W 200:200W 400:400W |                |
| ⑤ | 电源类型 Power supply type              | S2: 单相 Single-phase AC220V/50Hz~60Hz         | L: DC24V~DC48V |
| ⑥ | 功能码 Function code                   | D: 带数字显示 With digital display                |                |
|   |                                     | B: 带制动/刹车功能 With braking function            |                |
|   |                                     | R: 带485通讯功能 With 485 communication function  |                |
| ⑦ | 外观结构<br>Appearance structure        | A: 面板式 Panel type                            |                |
|   |                                     | B: 内置式 Built-in type                         |                |

### C41系列无感驱动器特点

#### Features of C41 series non-inductive drivers

- 只需三根电动力线：从根本上避免电机编码器线或霍尔信号线的连接不可靠、信号被干扰等问题，可有效提升系统的可靠性。  
Only three motor power lines are needed: Fundamentally avoiding problems such as unreliable connection of motor encoder lines or Hall signal lines and signal interference, which can effectively improve the reliability of the system.
- 无需电机编码器或霍尔传感器：采用高性能无位置传感器方案，实现电机的正弦波FOC矢量控制，节省了编码器或霍尔的线束和端子，有效降低系统的整体成本。  
No need for motor encoder or Hall sensor: Adopting a high-performance position sensorless solution, achieving sine wave FOC vector control of the motor, saving the wiring harness and terminals of the encoder or Hall, effectively reducing the overall cost of the system.
- 低速性能好：优秀的速度闭环控制性能，最低转速可达50rpm，调速比可以与带编码器电机驱动器相媲美。  
Good low-speed performance: Excellent speed closed-loop control performance, with a minimum speed of up to 50rpm, and a speed ratio comparable to motor drives with encoders.
- 支持大负载带载启动：最大允许150%电机额定负载转矩条件下带载启动；如需更大负载转矩条件下带载启动，可与我司沟通产品定制事宜。  
Support heavy load on-load starting: Maximum allowable on-load starting at 150% of the rated load torque of the motor; If you need to start with load under higher load torque conditions, you can communicate with our company about product customization matters.
- 支持超长距离电机控制：本产品与电机间三相动力线的最长允许距离为20米如需支持更长距离，可与我司沟通产品定制事宜。  
Support for ultra long distance motor control: The maximum allowable distance for the three-phase power line between this product and the motor is 20 meters. If you need to support a longer distance, you can communicate with our company about product customization matters.
- 速度波动小：额定转速条件下速度波动大约为1%优异的稳速性能可以媲美带编码器电机，满足绝大部分应用的需求。  
Low speed fluctuation: Under rated speed conditions, the speed fluctuation is about 1%, and the excellent speed stability performance can be comparable to motors with encoders, meeting the needs of the vast majority of applications.
- 可支持超高速电机：支持电机最高转速可达30000rpm，如需支持更高电机转速，可与我司沟通定制。  
Can support ultra high speed motors: Supports a maximum motor speed of up to 30000 rpm. If you need to support higher motor speeds, you can communicate with our company for customization.
- 适用性强：拥有强大的电机参数自动识别功能。本产品与各个厂商各类无霍尔直流无刷电机、无编码器永磁同步电机均可适配。  
Strong applicability: With powerful automatic recognition function for motor parameters, this product can be compatible with various manufacturers of Hall free DC brushless motors and encoder free permanent magnet synchronous motors.
- 高性价比。  
High cost-effectiveness.

■ 面板式 Panel type



ZDRV.C41-200L-R-A



ZDRV.C41-200S2-R-A



ZDRV.C41-400L-R-A



ZDRV.C41-400S2-R-A

■ 内置式 Internal type



ZDRV.C41-200L-R-B



ZDRV.C41-200S2-R-B



ZDRV.C41-400L-R-B



ZDRV.C41-400S2-R-B

## 规格 Specifications

| 型号参数<br>Model parameters           |   | C41系列无感驱动器 Series non-inductive driver   |  |  |               |                             |               |              |              |
|------------------------------------|---|--|--|--|---------------|-----------------------------|---------------|--------------|--------------|
|                                    |   | C41-200L-R-A   | C41-200S2-R-A  | C41-400L-R-A   | C41-400S2-R-A | C41-200L-R-B                | C41-200S2-R-B | C41-400L-R-B | C41-400L-R-B |
| 额定输入电压 Rated input voltage         |   | DC24V-DC48V  | AC220V/50HZ  | DC24V-DC48V  | AC220V/50HZ   | DC24V-DC48V                 | AC220V/50HZ   | DC24V-DC48V  | AC220V/50HZ  |
| 输出电流<br>Output current             | 额定电流 (rms) Rated current  | 7.5Arms  | 1.2Arms  | 15.0Arms   | 2.5Arms       | 7.5Arms                     | 1.2Arms       | 15.0Arms     | 2.5Arms      |
|                                    | 峰值电流 (peak) Peak current  | 22.5Ap   | 4.0Ap  | 45.0Ap   | 8.0Ap         | 22.5Ap                      | 4.0Ap         | 45.0Ap       | 8.0Ap        |
| 能耗制动 Energy consumption braking    |   | 无 No   |  |  |               |                             |               |              |              |
| 过压报警电压 Overvoltage alarm voltage   |   | 125%额定电压过压 Rated voltage overvoltage   |  |  |               |                             |               |              |              |
| 欠压报警电压 Under voltage alarm voltage |   | 70%额定电压过压 Rated voltage overvoltage  |  |  |               |                             |               |              |              |
| 过载时间 Overload time                 |   | 150%额定电流1分钟, 180%额定电流10秒, 200%额定电流1秒<br>150% rated current for 1 minute, 180% rated current for 10 seconds, and 200% rated current for 1 second  |  |  |               |                             |               |              |              |
| 冷却方式 Cooling method                |   | 自然冷却、接触式散热<br>Free cooling, contact cooling  |  |  |               |                             |               |              |              |
| 通用功能<br>General functions          | 数字量输入<br>Digital input  | 3路 (支持 NPN/PNP)<br>3-way<br>(Supporting NPN/PNP)   | 4路 (支持 NPN/PNP)<br>4-way<br>(Supporting NPN/PNP)   | 4路, 支持NPN/PNP, 光耦输入, 高电平DC12V~DC30V, 低电平DC0V~DC5V, 输入阻抗3KΩ<br>4-way, supporting NPN/PNP, optocoupler input, high-level DC12V~DC30V, low-level DC0V~DC5V, input impedance 3KΩ |               |                             |               |              |              |
|                                    | 数字量输入功能<br>Digital input function   | 正转运行、反转运行、三线制控制、正转点动、反转点动、自由停车、故障复位、电子刹车、外部故障输入、正转限位、反转限位、多端速选择等<br>Forward running, reverse running, three-wire control, forward jogging, reverse jogging, free parking, fault reset, electronic braking, external fault input, forward limit, reverse limit, multi terminal speed selection, etc         |  |  |               |                             |               |              |              |
|                                    | 模拟量输入 Analog input  | 1路, DC0V~DC5V/10V, PWM (3KHZ~10KHZ)  |  |  |               |                             |               |              |              |
|                                    | 模拟量输入功能<br>Analog input function  | 速度调节、转矩调节<br>Speed regulation, torque regulation   |  |  |               |                             |               |              |              |
|                                    | 数字量输出<br>Digital output   | 1路, 光耦输出, 兼容支持NPN/PNP, 最大工作电压60VDC, 最大输出电流100mA<br>1 channel, optocoupler output, compatible with NPN/PNP support, maximum working voltage 60VDC, maximum output current 100mA   |  |  |               |                             |               |              |              |
|                                    | 脉冲控制 Pulse control  | 无 No   |  |  |               |                             |               |              |              |
|                                    | 保护功能<br>Protection function   | 欠压保护、过压保护、过载保护、硬件过流保护、软件过流保护、限流保护、过温保护、缺相保护、堵转保护等<br>Undervoltage protection, overvoltage protection, overload protection, hardware overcurrent protection, software overcurrent protection, current limiting protection, over temperature protection, phase loss protection, locked rotor protection, etc |  |  |               |                             |               |              |              |
|                                    | 上位机<br>Upper computer   | 不支持<br>Not support   | 支持<br>Support  |  |               |                             |               |              |              |
| 操作面板<br>Operation panel            | 可配置中大的手持操作面板, 设置参数和读取数据<br>Configurable Zhongda handheld operation panel, setting parameters and reading data |  |  |  |               |                             |               |              |              |
| 总线控制<br>Bus control                | Modbus/RS485  | 无 No   | 最大支持115.2K波特率, 可使用Modbus RTU协议与控制器通讯<br>Supports a maximum baud rate of 115.2K and can communicate with the controller using the Modbus RTU protocol |  |               |                             |               |              |              |
|                                    | CANopen   | 无 No   |  |  |               |                             |               |              |              |
| 使用环境<br>Usage environment          | 工作温度<br>Working temperature   | -20~40°C, 40°C以上降额使用, 每升高1°C, 需降低2.5%之额定电流, 工作温度最高可至50°C<br>-20~40°C, derated for use above 40°C. For every 1°C increase, the rated current needs to be reduced by 2.5%.<br>The maximum operating temperature can reach 50°C   |  |  |               |                             |               |              |              |
|                                    | 存储温度<br>Storage temperature   | -30°C~+60°C, 空气温度变化小于1°C/分<br>-30°C~+60°C, with an air temperature change of less than 1°C/minute  |  |  |               |                             |               |              |              |
|                                    | 湿度 Humidity   | 90%RH以下, 不结露 Below 90% RH, without condensation  |  |  |               |                             |               |              |              |
|                                    | 防护等级 Protection level   | IP20   |  |  |               |                             |               |              |              |
|                                    | 安装方式 Installation method  | 面板式安装 Panel mounted  |  |  |               | 内置式安装 Built-in installation |               |              |              |
|                                    | 海拔 Height   | 1000米以下使用; 1000米以上降额使用, 每升高100米需降额1.5%使用; 海拔2000米以上请测试确认<br>Used below 1000 meters; For use with a derating of over 1000 meters, a derating of 1.5% is required for each 100 meter increase; Please test and confirm if the altitude is above 2000 meters  |  |  |               |                             |               |              |              |
| 气压 Pressure                        | 86kpa~106kpa  |  |  |  |               |                             |               |              |              |

# F10系列工业车辆驱动器

## F10 SERIES INDUSTRIAL VEHICLE DRIVER

Z    DRV    •    F10    —    1K5    L    —    RC

①    ②    ③    ④    ⑤    ⑥

|   |                                     |   |       |                |
|---|-------------------------------------|---|-------|----------------|
| ① | 公司名称缩写<br>Company name abbreviation | Z: 中大德 ZHONGDA LEADER                               |       |                |
| ② | 产品类型 Product type                   | DRV: 驱动器及相关产品 Drivers and related products          |       |                |
| ③ | 产品系列 Product series                 | F10: 无刷叉车驱动器系列 Brushless forklift driver series     |       |                |
| ④ | 功率等级 Power level                    | 750   | 1500  | 2000           |
|   |                                     | 750W  | 1500W | 2000W          |
| ⑤ | 电源类型 Power supply type              | S1: 单相 Single-phase AC110V/50Hz~60Hz                |       | L: DC24V~DC48V |
|   |                                     | S2: 单相 Single-phase AC220V/50Hz~60Hz                |       | L2: DC24V      |
|   |                                     | T2: 三相 Three-phase AC220V/50Hz~60Hz                 |       | L3: DC36V      |
|   |                                     | T3: 三相 Three-phase AC380V/50Hz~60Hz                 |       | L4: DC48V      |
| ⑥ | 功能码 Function code                   | D: 带数字显示 With digital display                       |       |                |
|   |                                     | B: 带制动/刹车功能 With braking function                   |       |                |
|   |                                     | C: 带CanOpen通讯功能 With CanOpen communication function |       |                |
|   |                                     | R: 带485通讯功能 With 485 communication function         |       |                |
|   |                                     | P: 带脉冲输入控制 With pulse input control                 |       |                |
|   |                                     | F: 带脉冲分频输出 With pulse frequency division output     |       |                |

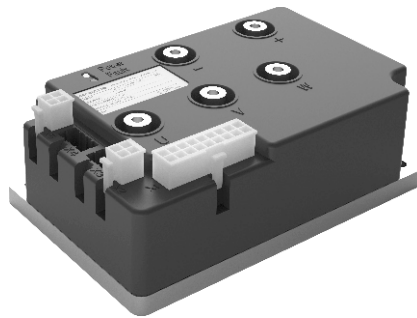
### F10系列工业车辆驱动器特点

#### F10 series industrial vehicle driver features

- 具有蓝牙功能，节省采购参数手柄。  
Equipped with Bluetooth function, saving procurement parameters and handles.
- 上位机软件辅助调试：借助免费PC上位机软件可实现参数修改、故障查询、状态监控，软件示波器显示波形等功能，让调试更简单。  
Upper computer software assisted debugging: With the help of free PC upper computer software, functions such as parameter modification, fault query, status monitoring, and software oscilloscope display of waveforms can be achieved, making debugging easier.
- 参数设置、使用习惯符合主流习惯。Parameter settings and usage habits are in line with mainstream habits.
- 与行业内主流产品完美兼容：电气接口、安装孔位与行业内主流产品完美兼容，使用原有线束，直接无缝替换，方便客户使用。  
Perfect compatibility with mainstream products in the industry: Electrical interfaces and installation holes are perfectly compatible with mainstream products in the industry. The original wiring harness is used for seamless replacement, making it convenient for customers to use.
- 支持两种控制模式：同时支持手柄模拟量输入和CAN通信输入两种控制方式。  
Support two control modes: Simultaneously supporting handle analog input and CAN communication input.
- 安全可靠、皮实耐用：完备、全面的保护功能，包括过流、过载、过压、欠压堵转、断线等保护功能，为产品保驾护航。  
Safe, reliable, and durable: Complete and comprehensive protection functions, including overcurrent, overload, overvoltage, undervoltage, rotor blocking, wire breakage, and other protection functions, provide protection for the product.



ZDRV.F10-1K5L-CR



ZDRV.F10-2K0L-CR

## 规格 Specifications

| 型号参数<br>Model parameters           |                                   | F10系列工业车辆驱动器 Series industrial vehicle driver  |                  |
|------------------------------------|-----------------------------------|--|------------------|
|                                    |                                   | ZDRV.F10-1K5L-CR   | ZDRV.F10-2K0L-CR |
| 额定输入电压 Rated input voltage         |                                   | 24VDC~48VDC  |                  |
| 输出电流<br>Output current             | 额定电流 (rms) Rated current          | 35Arms   | 50Arms           |
|                                    | 峰值电流 (peak) Peak current          | 90Ap   | 200Ap            |
| 编码器 Coder                          |                                   | 增量式 (单端) Incremental (Single ended)  |                  |
| 霍尔 Hall                            |                                   | UVW  |                  |
| 过压报警电压 Overvoltage alarm voltage   |                                   | DC65V±1V   |                  |
| 欠压报警电压 Under voltage alarm voltage |                                   | DC18V±1V   |                  |
| 过载时间 Overload time                 |                                   | 90A (10s)  | 200A (1min)      |
| 冷却方式 Cooling method                |                                   | 自然冷却 (满功率运行, 需辅助散热)<br>Free cooling (Full power operation, auxiliary heat dissipation required)  |                  |
| 通用功能<br>General functions          | 数字量输入<br>Digital input            | 9路, 高电平12V~48VDC, 低电平0~5VDC<br>9-way, high-level 12V~48VDC, low-level 0~5VDC   |                  |
|                                    | 数字量输入功能<br>Digital input function | 前进, 后退, 抬升, 下降, 龟速, 互锁开关, 紧急反向等<br>Forward, backward, lift, descend, turtle speed, interlock switch, emergency reverse, etc  |                  |
|                                    | 模拟量输入 Analog input                | 1路 (0-5V) 1-way (0-5V)   |                  |
|                                    | 模拟量输入功能<br>Analog input function  | 运行速度<br>Running speed  |                  |
|                                    | 数字量输出<br>Digital output           | 3路 (48V, 最大1A电流)<br>3-way (48V, maximum 1A current)  |                  |
|                                    | 保护功能<br>Protection function       | 欠压保护、过压保护、过载保护、软件过流保护、过温保护、硬件过流保护、堵转保护等<br>Undervoltage protection, overvoltage protection, overload protection, software overcurrent protection, over temperature protection, hardware overcurrent protection, locked rotor protection, etc |                  |
|                                    | 上位机<br>Upper computer             | 可使用485通讯连接电脑上位机软件, 设置参数, 抓取波形, 程序升级<br>Can use 485 communication to connect to computer upper computer software, set parameters, capture waveforms, and upgrade programs   |                  |
|                                    | 蓝牙<br>Bluetooth                   | 通过手机蓝牙连接驱动器修改参数<br>Modifying parameters by connecting to the driver through Bluetooth on a mobile phone  |                  |
| 总线控制<br>Bus control                | Modbus/RS485                      | 最大支持115.2K波特率, 可使用Modbus RTU协议与控制器通讯<br>Supports a maximum baud rate of 115.2K and can communicate with the controller using the Modbus RTU protocol   |                  |
|                                    | CANopen                           | 最大支持1M波特率, 可使用CANopen协议与控制器通讯<br>Supports a maximum baud rate of 1M and can communicate with the controller using the CANopen protocol   |                  |
| 使用环境<br>Usage environment          | 工作温度 Working temperature          | -25~50°C; 50度以上降额使用 Derating usage above 50 degrees Celsius  |                  |
|                                    | 存储温度 Storage temperature          | -45°C~60°C   |                  |
|                                    | 湿度 Humidity                       | 90%EH以下 Below 90% EH   |                  |
|                                    | 防护等级 Protection level             | IP54   |                  |
|                                    | 安装方式 Installation method          | 垂直或水平安装 Vertical or horizontal installation  |                  |
|                                    | 海拔 Height                         | 1000米以下, 工作海拔在1000米以上时, 每上升100米, 需降额1.5%使用, 最高工作海拔4000米<br>When the working altitude is above 1000 meters and below 1000 meters, a derating of 1.5% is required for every 100 meters increase. The maximum working altitude is 4000 meters   |                  |
|                                    | 气压 Pressure                       | 86kpa~106kpa   |                  |

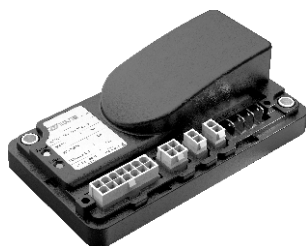
## F20系列工业车辆驱动器 F20 SERIES INDUSTRIAL VEHICLE DRIVER

Z    DRV    •    F20    —    020    L2    —    RC  
①        ②                    ③                    ④                    ⑤                    ⑥

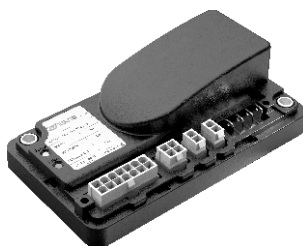
|   |                                     |   |                |     |
|---|-------------------------------------|---|----------------|-----|
| ① | 公司名称缩写<br>Company name abbreviation | Z: 中大力德 ZHONGDA LEADER                                    |                |     |
| ② | 产品类型 Product type                   | DRV: 驱动器及相关产品 Drivers and related products                |                |     |
| ③ | 产品系列 Product series                 | F20: 有刷叉车驱动器系列 Rated current brush forklift driver series |                |     |
| ④ | 额定电流 Rated current                  | 020   | 030            | 050 |
|   |                                     | 20A   | 30A            | 50A |
| ⑤ | 电源类型 Power supply type              | S1: 单相 Single-phase AC110V/50Hz~60Hz                      | L: DC24V~DC48V |     |
|   |                                     | S2: 单相 Single-phase AC220V/50Hz~60Hz                      | L2: DC24V      |     |
|   |                                     | T2: 三相 Three-phase AC220V/50Hz~60Hz                       | L3: DC36V      |     |
|   |                                     | T3: 三相 Three-phase AC380V/50Hz~60Hz                       | L4: DC48V      |     |
| ⑥ | 功能码 Function code                   | D: 带数字显示 With digital display                             |                |     |
|   |                                     | B: 带制动/刹车功能 With braking function                         |                |     |
|   |                                     | C: CAN总线控制手柄 CAN bus control handle                       |                |     |
|   |                                     | R: 带485通讯功能 With 485 communication function               |                |     |
|   |                                     | P: 模拟量控制手柄 Analog control handle                          |                |     |
|   |                                     | F: 带脉冲分频输出 With pulse frequency division output           |                |     |

### F20系列工业车辆驱动器特点 F20 series industrial vehicle driver features

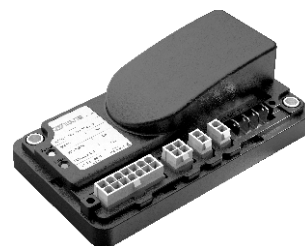
- 上位机软件辅助调试：借助免费PC上位机软件可实现参数修改、故障查询、状态监控，软件示波器显示波形等功能，让调试更简单。  
Upper computer software assisted debugging: With the help of free PC upper computer software, functions such as parameter modification, fault query, status monitoring, and software oscilloscope display of waveforms can be achieved, making debugging easier.
- 参数设置、使用习惯符合主流习惯。Parameter settings and usage habits are in line with mainstream habits.
- 与行业内主流产品完美兼容：电气接口、安装孔位与行业内主流产品完美兼容，使用原有线束，直接无缝替换，方便客户使用。  
Perfect compatibility with mainstream products in the industry: Electrical interfaces and installation holes are perfectly compatible with mainstream products in the industry. The original wiring harness is used for seamless replacement, making it convenient for customers to use.
- 支持两种控制模式：同时支持手柄模拟量输入和CAN通信输入两种控制方式。  
Support two control modes: Simultaneously supporting handle analog input and CAN communication input.
- 安全可靠、皮实耐用：完备、全面的保护功能，包括过流、过载、过压、欠压堵转、断线等保护功能，为产品保驾护航。  
Safe, reliable, and durable: Complete and comprehensive protection functions, including overcurrent, overload, overvoltage, undervoltage, rotor blocking, wire breakage, and other protection functions, provide protection for the product.
- 好用不贵、性价比高：产品品质好，性能优异，价格实惠，物超所值，值得信赖。  
Easy to use but not expensive, with high cost-effectiveness: The product has good quality, excellent performance, affordable price, value for money, and is trustworthy.



ZDRV.F20-020L2-RP



ZDRV.F20-020L2-RC



ZDRV.F20-030L2-RC



ZDRV.F20-030L2-RP



ZDRV.F20-050L2-RP



ZDRV.F20-050L2-RC

## 规格 Specifications

| 型号参数<br>Model parameters           |                                   | F20系列工业车辆驱动器 Series industrial vehicle driver  |  |              |   |              |              |
|------------------------------------|-----------------------------------|--|--|--------------|---|--------------|--------------|
|                                    |                                   | F20-020L2-RP   | F20-030L2-RP   | F20-050L2-RP | F20-020L2-RC  | F20-030L2-RC | F20-050L2-RC |
| 额定输入电压 Rated input voltage         |                                   | DC24V-DC48V  |  |              |   |              |              |
| 输出电流<br>Output current             | 额定电流 (rms) Rated current          | 20Arms   | 30Arms   | 50Arms       | 20Arms  | 30Arms       | 50Arms       |
|                                    | 峰值电流 (peak) Peak current          | 90Ap   | 100Ap  | 125Ap        | 90Ap  | 100Ap        | 125Ap        |
| 过压报警电压 Overvoltage alarm voltage   |                                   | 28.8V  |  |              |   |              |              |
| 欠压报警电压 Under voltage alarm voltage |                                   | 19.2V  |  |              |   |              |              |
| 过载时间 Overload time                 |                                   | 90A(10S)   | 100A(10S)  | 125A(10S)    | 90A(10S)  | 100A(10S)    | 125A(10S)    |
| 冷却方式 Cooling method                |                                   | 辅助散热 Auxiliary heat dissipation  |  |              |   |              |              |
| 通用功能<br>General functions          | 数字量输入<br>Digital input            | 5路 Way   |  |              | 6路 Way  |              |              |
|                                    | 数字量输入功能<br>Digital input function | 高电平10V~30Vdc, 低电平0~5Vdc, 输入阻抗47kΩ<br>High level 10V~30Vdc, low level 0~5Vdc, input impedance 47kΩ  |  |              | 高电平10V~30Vdc, 低电平0~5Vdc, 输入阻抗47kΩ<br>High level 10V~30Vdc, low level 0~5Vdc, input impedance 47kΩ |              |              |
|                                    | 模拟量输入 Analog input                | 3路, 0Vdc~+5Vdc   |  |              |   |              |              |
|                                    | 模拟量输入功能<br>Analog input function  | 加速器输入、加速器低端、限速器/抬升锁定信号输入<br>Accelerator input, accelerator low end, speed limiter/lift lock signal input   |  |              | 加速器输入、加速器低端、限速器信号输入<br>Accelerator input, accelerator low end, speed limiter signal input         |              |              |
|                                    | 数字量输出<br>Digital output           | 3路, 最大工作电压28Vdc, 最大电流0.5A<br>3-way, maximum working voltage 28Vdc, maximum current 0.5A  |  |              | 4路, 最大工作电压28Vdc, 最大电流0.5A<br>4-way, maximum working voltage 28Vdc, maximum current 0.5A           |              |              |
|                                    | 脉冲控制 Pulse control                | 无 No   |  |              |   |              |              |
|                                    | 保护功能<br>Protection function       | 欠压保护、过压保护、过载保护、硬件过流保护、软件过流保护、限流保护、过温保护、缺相保护、堵转保护等<br>Undervoltage protection, overvoltage protection, overload protection, hardware overcurrent protection, software overcurrent protection, current limiting protection, over temperature protection, phase loss protection, locked rotor protection, etc |  |              |   |              |              |
|                                    | 上位机<br>Upper computer             | 可使用485通讯连接电脑上位机软件, 设置参数, 抓取波形, 程序升级<br>Can use 485 communication to connect to computer upper computer software, set parameters, capture waveforms, and upgrade programs   |  |              |   |              |              |
|                                    | 操作面板 Operation panel              | 无 No   |  |              |   |              |              |
|                                    | 总线控制<br>Bus control               | Modbus/RS485   | 最大支持115.2K波特率, 可使用Modbus RTU协议与控制器通讯<br>Supports a maximum baud rate of 115.2K and can communicate with the controller using the Modbus RTU protocol |              |   |              |              |
| CANopen                            |                                   | 不支持 Not support  |  |              | 支持 Support  |              |              |
| 使用环境<br>Usage environment          | 工作温度 Working temperature          | -25~40°C; 40度以上降额使用 Derating usage above 40 degrees Celsius  |  |              |   |              |              |
|                                    | 存储温度 Storage temperature          | -10°C~70°C   |  |              |   |              |              |
|                                    | 湿度 Humidity                       | 90%RH以下, 不结露 Below 90% RH, without condensation  |  |              |   |              |              |
|                                    | 防护等级 Protection level             | IP54   |  |              |   |              |              |
|                                    | 安装方式 Installation method          | 垂直或水平安装 Vertical or horizontal installation  |  |              |   |              |              |
|                                    | 海拔 Height                         | 1000米以下, 工作海拔在1000米以上时, 每上升100米, 需降额1.5%使用, 最高工作海拔4000米<br>When the working altitude is above 1000 meters and below 1000 meters, a derating of 1.5% is required for every 100 meters increase. The maximum working altitude is 4000 meters   |  |              |   |              |              |
| 气压 Pressure                        | 86kpa~106kpa                      |  |  |              |   |              |              |

## 交流调速器 AC SPEED CONTROLLER

A21

040

S1/S2

D/B

①

②

③

④

| ① | 类型 Type    | A21: 力矩面板式 (外置电容)<br>Torque panel type<br>(External capacitor) | A22: 数显内置式 (外置电容)<br>Display internal type<br>(External capacitor) | A23: 数显带刹车式<br>Display brake type | A24: 数显内置式 (带刹车)<br>Display internal type (With brake) |
|---|------------|--|--|-----------------------------------|--|
| ② | 功率 Power   | 040<br>≤40W  | 200<br>≤200W   | 200<br>≤200W                      | 200<br>≤200W   |
| ③ | 电压 Voltage | S1<br>AC110V (50HZ / 60HZ)                                     |  | S2<br>AC220V (50HZ / 60HZ)        |  |
| ④ | 功能 Feature | D: 数显式 With display<br>B: 带制动/刹车 With brake                    |  |                                   |  |



A21-040S2-D



A22-200S2-DB



A23-200S2-DB



A24-200S2-DB

### ■ A21系列面板式力矩驱动器特点

#### Features of A21 series plate torque driver

- 采用MCU数字控制技术, 功能丰富, 性能优异。
- 采用数显菜单式选项, 修改设定方便快捷。
- 可实现缓慢加大力矩、缓慢减小力矩。
- 可面板操作、外接开关控制。
- 面板旋钮自动匹配最大力矩, 力矩控制方便、安全。
- 自动识别输入电源频率。
- 附电机散热风扇电源接口, 方便接线。
- Using MCU digital control technology, it has rich functions and excellent performance.
- Using digital display menu options, it is convenient and quick to modify settings.
- It can gradually increase the torque and slowly decrease the torque.
- Panel operation, external switch control.
- The panel knob automatically matches the maximum torque, and the torque control is convenient and safe.
- Automatic identification of input power frequency.
- With motor cooling fan power interface for easy wiring.

### ■ A22系列内置式数显调速器特点

#### Features of A22 series built - in digital display governor

- 采用MCU数字控制技术, 功能丰富, 性能优异。
- 采用数显菜单式选项, 修改设定方便快捷。
- 可根据用户显示需要设定显示倍率, 自动换算显示目标值。
- 可实现缓慢加速、缓慢减速、快速停止、3段速等。
- 可外接开关控制、0-5V模拟量控制。
- 模拟量控制可自动匹配最高转速, 调速控制方便、安全。
- 自动识别输入电源频率。
- 堵转功能保护, 防止电机、调速器因堵转烧坏。  
(此功能可保护堵转过载, 但无法保护非堵转过载)
- Using MCU digital control technology, it has rich functions and excellent performance.
- Using digital display menu options, it is convenient and quick to modify settings.
- The display magnification can be set according to the user's display needs, and the display target value can be automatically converted.
- It can realize slow acceleration, slow deceleration, quick stop, 3-stage speed, etc.
- External switch control, 0-5V analog control.
- Analog control can automatically match the maximum speed, and the speed control is convenient and safe.
- Automatic identification of input power frequency.
- Lock-rotor function protection to prevent motor and governor from burning out due to locked-rotor.  
(This function can protect the stall overload, but cannot protect the non-stall overload)



## A23系列带刹车数显调速器特点

### Features of A23 series with brake digital display governor

- 采用MCU数字控制技术，功能丰富，性能优异。
  - 采用数显菜单式选项，修改设定方便快捷。
  - 可根据用户显示需要设定显示倍率，自动换算显示目标值。
  - 可实现缓慢加速、缓慢减速、失电电磁制动。
  - 可面板操作、外接开关控制。
  - 面板旋钮自动匹配最高转速，调速控制方便、安全。
  - 内置运行电容。
  - 自动识别输入电源频率。
  - 堵转功能保护，防止电机、调速器因堵转烧坏。
- (此功能可保护堵转过载，但无法保护非堵转过载)
- Using MCU digital control technology, it has rich functions and excellent performance.
  - Using digital display menu options, it is convenient and quick to modify settings.
  - The display magnification can be set according to the user's display needs, and the display target value can be automatically converted.
  - It can realize slow acceleration, slow deceleration and power-off electromagnetic braking.
  - Panel operation, external switch control.
  - The panel knob automatically matches the maximum speed, and the speed control is convenient and safe.
  - Built-in running capacitor.
  - Automatic identification of input power frequency.
  - Lock-rotor function protection to prevent motor and governor from burning out due to locked-rotor.
- (This function can protect the stall overload, but cannot protect the non-stall overload)

US      5      120      A/C  
 ①      ②      ③      ④

| ① | 类型 Type    | US: 通用型 Universal type; ZF: 数显面板式 Digital display |           |              |           |              |                           |              |             |                |  |
|---|------------|---|-----------|--------------|-----------|--------------|---------------------------|--------------|-------------|----------------|--|
| ② | 机座号 Size   | 2<br>60*60mm                                      |           | 3<br>70*70mm |           | 4<br>80*80mm |                           | 5<br>90*90mm |             | 6<br>104*104mm |  |
| ③ | 功率 Power   | 6<br>6W   | 15<br>15W | 25<br>25W    | 40<br>40W | 60<br>60W    | 90<br>90W                 | 120<br>120W  | 140<br>140W | 200<br>200W    |  |
| ④ | 电压 Voltage | A<br>AC110V (50Hz / 60Hz)                         |           |              |           |              | C<br>AC220V (50Hz / 60Hz) |              |             |                |  |

## US系列调速器特点 Features of US series speed controller

- 具有正反转切换、调速功能。
  - 采用SMD技术设计，高可靠性。
  - 安装简单、接线简单，使用方便。
  - 内置运行电容。
  - 与调速电机组实现宽范围的无级变速。
- It has the functions of forward and reverse switching and speed regulation.
  - Designed with SMD technology, high reliability.
  - Simple installation, simple wiring, and easy to use.
  - Built-in running capacitor.
  - Combined with the speed regulating motor to realize a wide range of stepless speed change.

## ZF系列调速器特点 Features of ZF series speed controller

- 采用MCU数字控制技术，功能丰富，性能优异。
  - 采用数显菜单式选项，修改设定方便快捷。
  - 可根据用户显示需要设定显示倍率，自动换算显示目标值。
  - 可实现缓慢加速、缓慢减速。
  - 可面板操作、外接开关控制。
  - 面板旋钮自动匹配最高转速，调速控制方便、安全。
  - 内置运行电容。
  - 自动识别输入电源频率。
  - 堵转功能保护，防止电机、调速器因堵转烧坏。
- (此功能可保护堵转过载，但无法保护非堵转过载)
- Using MCU digital control technology, rich functions and excellent performance.
  - Using digital display menu options, it is convenient and quick to modify settings.
  - The display magnification can be set according to the user's display needs, and the display target value can be automatically converted.
  - It can realize slow acceleration and slow deceleration.
  - Panel operation, external switch control.
  - The panel knob automatically matches the maximum speed, and the speed control is convenient and safe.
  - Built-in running capacitor.
  - Automatic identification of input power frequency.
  - Stall-rotor protection function to prevent motor and controller from being burned out due to blocked-rotor (This function can protect blocked-rotor overload, but cannot protect non-blocked-rotor overload)

● US系列产品示意图



● ZF系列产品示意图



驱动器技术支持微信二维码



中大力德公众号二维码

Blank page with horizontal dashed lines for writing.

# CATALOGUE



小型交流齿轮减速电机  
SMALL AC GEAR MOTOR

ZD 中大刀德



微型永磁无刷齿轮减速电机  
DC BRUSHLESS GEAR MOTOR

ZD 中大刀德



传动行星减速电机  
TRANSMISSION PLANETARY

ZD 中大刀德



ZB/ZBR/ZE/ZER/HD/HDR系列  
高精度行星减速机  
PLANETARY GEAR BOX

ZD 中大刀德



ZDR系列高精度减速机  
PLANETARY GEAR BOX

ZD 中大刀德



ZDE/ZDF/ZDWE/ZDWF/ZDS系列  
高精度行星减速机  
PLANETARY GEAR BOX

ZD 中大刀德

# SERVO DRIVER / BRUSHLESS DRIVER INDUSTRIAL VEHICLE DRIVER AC SPEED CONTROLLER

**宁波中大力德智能传动股份有限公司**  
**NINGBO ZHONGDA LEADER INTELLIGENT TRANSMISSION CO.,LTD.**

地址：浙江省慈溪高新技术产业开发区新兴一路185号  
Add : NO.185 1st Xinxing Road, New Industrial Zone, Cixi City, Zhejiang, China.

**宁波中大创远精密传动设备有限公司**  
**ZHONGDA CHUANGYUAN PRECISE TRANSMISSION EQUIPMENT CO.,LTD.**

地址：浙江省宁波杭州湾新区金慈路159号  
Add : No.159 Jinci Road, Hangzhou Bay District, Ningbo City, Zhejiang, China.

**国内贸易服务：**

电话：0574-63537377  
传真：0574-63534879  
E-mail: china@zd-motor.com

**国际贸易服务：**

International trade department:  
Tel: 86-574-63537171 Fax: 86-574-63534879  
E-mail: sales@zd-motor.com  
Web: www.zddriver.com  
www.zd-motor.com

更多详情，敬请浏览：  
**www.zd-motor.com**